

## Product datasheet for PH311275

### SLURP1 (NM\_020427) Human Mass Spec Standard

#### Product data:

Product Type:	Mass Spec Standards
Description:	SLURP1 MS Standard C13 and N15-labeled recombinant protein (NP_065160)
Species:	Human
Expression Host:	HEK293
Expression cDNA Clone or AA Sequence:	RC211275
Predicted MW:	11.2 kDa
Protein Sequence:	>RC211275 protein sequence <b>Red</b> =Cloning site <b>Green</b> =Tags(s)  MASRWAVQLLLVAAWSMGCGEALKCYTCKEPMTSASCRTITRCKPEDTACMTTLVTVEAEYPFNQSPVVT RSCSSSCVATDPDSIGAAHLIFCCFRDLCNSEL  <b>TR</b> TRPLEQKLISEEDLAANDILDYKDDDDKV
Tag:	C-Myc/DDK
Purity:	> 80% as determined by SDS-PAGE and Coomassie blue staining
Concentration:	>0.05 µg/µL as determined by microplate BCA method
Labeling Method:	Labeled with [U- 13C6, 15N4]-L-Arginine and [U- 13C6, 15N2]-L-Lysine
Buffer:	25 mM Tris-HCl, 100 mM glycine, pH 7.3
Storage:	Store at -80°C. Avoid repeated freeze-thaw cycles.
Stability:	Stable for 3 months from receipt of products under proper storage and handling conditions.
RefSeq:	<u><a href="#">NP_065160</a></u>
RefSeq Size:	537
RefSeq ORF:	309
Synonyms:	ANUP; ARS; ArsB; LY6-MT; LY6LS; MDM
Locus ID:	57152
UniProt ID:	<u><a href="#">P55000</a></u>
Cytogenetics:	8q24.3



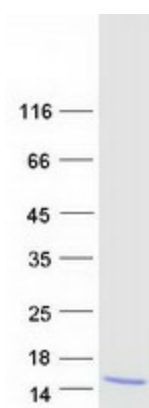
[View online »](#)

**Summary:**

The protein encoded by this gene is a member of the Ly6/uPAR family but lacks a GPI-anchoring signal sequence. It is thought that this secreted protein contains antitumor activity. Mutations in this gene have been associated with Mal de Meleda, a rare autosomal recessive skin disorder. This gene maps to the same chromosomal region as several members of the Ly6/uPAR family of glycoprotein receptors. [provided by RefSeq, Jul 2008]

**Protein Families:**

Druggable Genome, Secreted Protein

**Product images:**

Coomassie blue staining of purified SLURP1 protein (Cat# [TP311275]). The protein was produced from HEK293T cells transfected with SLURP1 cDNA clone (Cat# [RC211275]) using MegaTran 2.0 (Cat# [TT210002]).