

## Product datasheet for PH311264

### STARS (ABRA) (NM\_139166) Human Mass Spec Standard

#### Product data:

Product Type:	Mass Spec Standards
Description:	ABRA MS Standard C13 and N15-labeled recombinant protein (NP_631905)
Species:	Human
Expression Host:	HEK293
Expression cDNA Clone or AA Sequence:	RC211264
Predicted MW:	43.1 kDa
Protein Sequence:	>RC211264 protein sequence Red=Cloning site Green=Tags(s)

MAPGEKESGEGPAKSALRKIRTATLVISLARGWQWANENSIRQAQEP TGWLPGGTQDSPQAPKPIPTPT  
SHQKAQSAPKSPPRLP EGHGDGQSSEKAPEVSHIKKKEVSKTVVSKTYERGGDVSHLSHRYERDAGVLEP  
GQPENIDRILHSHGSPTRRRKCANLVSELTKGWRVMEQEEPTWRSDSVDTEDSGYGGEAEERPEQDGVQ  
VAVVRIKRPLPSQVNRFT EKLNCKAQKYSVPVGNLKGWRQQWADEHIQSQKLNPFSEEFDYELAMSTR LH  
KGDEGYGRPKEGKT AERAKRAEEHIYREMMDMCFI ICTMARHRRD GKIQVTFGDLFD RYVRI SDKVVG I  
LMRARKHGLVDFEGEMLWQRDDHVITLLK

TRTRPLEQKLISEEDLAANDILDYKDDDDKV

Tag:	C-Myc/DDK
Purity:	> 80% as determined by SDS-PAGE and Coomassie blue staining
Concentration:	>0.05 µg/µL as determined by microplate BCA method
Labeling Method:	Labeled with [U- <sup>13</sup> C <sub>6</sub> , <sup>15</sup> N <sub>4</sub> ]-L-Arginine and [U- <sup>13</sup> C <sub>6</sub> , <sup>15</sup> N <sub>2</sub> ]-L-Lysine
Buffer:	25 mM Tris-HCl, 100 mM glycine, pH 7.3
Storage:	Store at -80°C. Avoid repeated freeze-thaw cycles.
Stability:	Stable for 3 months from receipt of products under proper storage and handling conditions.
RefSeq:	<u><a href="#">NP_631905</a></u>
RefSeq Size:	2831
RefSeq ORF:	1143
Synonyms:	STARS
Locus ID:	137735



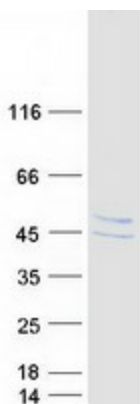
[View online »](#)

UniProt ID: [Q8N0Z2](#)

Cytogenetics: 8q23.1

Summary: Acts as an activator of serum response factor (SRF)-dependent transcription possibly by inducing nuclear translocation of MKL1 or MKL2 and through a mechanism requiring Rho-actin signaling.[UniProtKB/Swiss-Prot Function]

### Product images:



Coomassie blue staining of purified ABRA protein (Cat# [TP311264]). The protein was produced from HEK293T cells transfected with ABRA cDNA clone (Cat# [RC211264]) using MegaTran 2.0 (Cat# [TT210002]).