

Product datasheet for PH311255

LRPAP1 (NM_002337) Human Mass Spec Standard

Product data:

Product Type:	Mass Spec Standards
Description:	LRPAP1 MS Standard C13 and N15-labeled recombinant protein (NP_002328)
Species:	Human
Expression Host:	HEK293
Expression cDNA Clone or AA Sequence:	RC211255
Predicted MW:	41.5 kDa
Protein Sequence:	>RC211255 protein sequence Red=Cloning site Green=Tags(s)

MAPRRVRSFLRGLPALLLLLLFLGPWPAASHGGKYSREKNQPKPSPKRESGEEFRMEKLNQLWEKAQRLH
LPPVRLAELHADLKIQRDELAWKCLKLDGLDEDGEKEARLIRNLNVILAKYGLDGKDDARQVTSNSLSG
TQEDGLDDPRLEKLWHKAKTSGKFSGEELDKLWREFLHHKEKVHEYNVLLETLSRTEEIHENVISPSDLS
DIKGSVLHSRHTLKEKLRINQGLDRLRRVSHQGYSTEAEEPRVIDLWDLAQSANLTDKELEAFREE
LKHFEAKIEKHNYKQKLEIAHEKLRHAESVGDGERVSRSEKHALLEGRTKELGYTVKKHLQDLSGRIS
RARHNEL

TRTRPLEQKLI SEEDLAANDILDYKDDDDKV

Tag:	C-Myc/DDK
Purity:	> 80% as determined by SDS-PAGE and Coomassie blue staining
Concentration:	>0.05 µg/µL as determined by microplate BCA method
Labeling Method:	Labeled with [U- ¹³ C ₆ , ¹⁵ N ₄]-L-Arginine and [U- ¹³ C ₆ , ¹⁵ N ₂]-L-Lysine
Buffer:	25 mM Tris-HCl, 100 mM glycine, pH 7.3
Storage:	Store at -80°C. Avoid repeated freeze-thaw cycles.
Stability:	Stable for 3 months from receipt of products under proper storage and handling conditions.
RefSeq:	<u>NP_002328</u>
RefSeq Size:	10536
RefSeq ORF:	1071
Synonyms:	A2MRAP; A2RAP; alpha-2-MRAP; HBP44; MRAP; MYP23; RAP
Locus ID:	4043



[View online »](#)

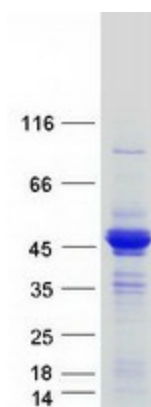
UniProt ID: [P30533](#)

Cytogenetics: 4p16.3

Summary: This gene encodes a protein that interacts with the low density lipoprotein (LDL) receptor-related protein and facilitates its proper folding and localization by preventing the binding of ligands. Mutations in this gene have been identified in individuals with myopia 23. Alternative splicing results in multiple transcript variants. [provided by RefSeq, Dec 2013]

Protein Families: Druggable Genome, Transmembrane

Product images:



Coomassie blue staining of purified LRPAP1 protein (Cat# [TP311255]). The protein was produced from HEK293T cells transfected with LRPAP1 cDNA clone (Cat# [RC211255]) using MegaTran 2.0 (Cat# [TT210002]).