

## Product datasheet for PH311245

### KIAA1958 (NM\_133465) Human Mass Spec Standard

#### Product data:

Product Type:	Mass Spec Standards
Description:	KIAA1958 MS Standard C13 and N15-labeled recombinant protein (NP_597722)
Species:	Human
Expression Host:	HEK293
Expression cDNA Clone or AA Sequence:	RC211245
Predicted MW:	79.2 kDa
Protein Sequence:	>RC211245 protein sequence <b>Red</b> =Cloning site <b>Green</b> =Tags(s)

MEDCLHTSSENLSKLVSWAHSHGTICSLIPNLKHLLSEGSNGLTAMWGCSAGHAYHWPLTATCRAGSQE  
RVCFQDNRSFNSDSPSIIIGVPSSETQTSPPVRYGPRPVKAKLDCNRTRDSCDFSYCSEPELDETVEEYED  
ENTLFDVMCESSVTDESDFEPTQRPQSIARKRPGVVPSSLHSSQTQMVDECSNDVVIKKIKQEIPED  
YYIVANAELTGGVDGPALSLTQMAKPKPQTHAGPSCVGS AKLIPHVTS AISTELDPHGMSASPSVISRPI  
VQKTARVSLASPNRPPGTHGTNQVAMQMPVSTSHPNKQISIPLSALQLPGQDEQVASEEFLSHLPSQV  
SSCEVALSPSVNTEPEVSSSQQPPVAPAITTEATAQCIPAYSTKLNKFPVFNINDLNDLCTSAVSPNT  
TKATRYALNVWRWYWCMTNGLKDHTDITKIPAVKLNELLENFYVTVKKSDGSDFLATSLHAIRRLDRILK  
NAGVGFSTISSTFSSSTKKEKLVWVSKAGMSGARSNIYVYFSLSDEEEMWQAGCLGDDSPITLLSTVV  
KYNSQYLNMRQLQEADLMYGDIELLKDPQNPYFARTDSVKRESRSGSTRVCHGKIYHEHSRHKQCPY  
CLLYKMYIHRPPTQMEAKSPFYLTARKEATDMGSVWYEEQRMGLRSLRGIVPNLAKKVKLENCENFTFV  
SFTQVSRRLGSHSCCQ

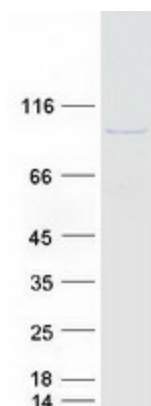
**TR**TRPLEQKLISEEDLAANDILDYKDDDDKV

Tag:	C-Myc/DDK
Purity:	> 80% as determined by SDS-PAGE and Coomassie blue staining
Concentration:	>0.05 µg/µL as determined by microplate BCA method
Labeling Method:	Labeled with [U- 13C6, 15N4]-L-Arginine and [U- 13C6, 15N2]-L-Lysine
Buffer:	25 mM Tris-HCl, 100 mM glycine, pH 7.3
Storage:	Store at -80°C. Avoid repeated freeze-thaw cycles.
Stability:	Stable for 3 months from receipt of products under proper storage and handling conditions.
RefSeq:	<u><a href="#">NP_597722</a></u>



[View online »](#)

RefSeq Size: 7575  
RefSeq ORF: 2148  
Locus ID: 158405  
UniProt ID: [Q8N8K9](#)  
Cytogenetics: 9q32

**Product images:**

Coomassie blue staining of purified KIAA1958 protein (Cat# [TP311245]). The protein was produced from HEK293T cells transfected with KIAA1958 cDNA clone (Cat# [RC211245]) using MegaTran 2.0 (Cat# [TT210002]).