

Product datasheet for PH311241

SPC24 (NM_182513) Human Mass Spec Standard

Product data:

Product Type:	Mass Spec Standards
Description:	SPC24 MS Standard C13 and N15-labeled recombinant protein (NP_872319)
Species:	Human
Expression Host:	HEK293
Expression cDNA Clone or AA Sequence:	RC211241
Predicted MW:	22.4 kDa
Protein Sequence:	>RC211241 protein sequence Red=Cloning site Green=Tags(s) MAAFRDIEEVSQGLLSLLGANRAEAQQRLLGRHEQVVERLLETQDGAEKQLREILTMEKEVAQSLNNAK EQVHQGGVELQQLQLEAGLQEAEEEDTRLKASLLQLTRELEELKEIEADLERQEKEVEDTTVTIPSAVYVA QLYHQVSKIEWDYECEPGMVKGIHHGPSVAQPIHLDSTQLSRKFI SDYLWSLVDTEW TRTRPLEQKLISEEDLAANDILDYKDDDDKV
Tag:	C-Myc/DDK
Purity:	> 80% as determined by SDS-PAGE and Coomassie blue staining
Concentration:	>0.05 µg/µL as determined by microplate BCA method
Labeling Method:	Labeled with [U- ¹³ C ₆ , ¹⁵ N ₄]-L-Arginine and [U- ¹³ C ₆ , ¹⁵ N ₂]-L-Lysine
Buffer:	25 mM Tris-HCl, 100 mM glycine, pH 7.3
Storage:	Store at -80°C. Avoid repeated freeze-thaw cycles.
Stability:	Stable for 3 months from receipt of products under proper storage and handling conditions.
RefSeq:	NP_872319
RefSeq Size:	654
RefSeq ORF:	591
Synonyms:	SPBC24
Locus ID:	147841
UniProt ID:	Q8NBT2



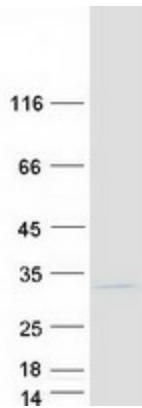
[View online »](#)

Cytogenetics: 19p13.2

Summary: Acts as a component of the essential kinetochore-associated NDC80 complex, which is required for chromosome segregation and spindle checkpoint activity (PubMed:14738735). Required for kinetochore integrity and the organization of stable microtubule binding sites in the outer plate of the kinetochore (PubMed:14738735). The NDC80 complex synergistically enhances the affinity of the SKA1 complex for microtubules and may allow the NDC80 complex to track depolymerizing microtubules (PubMed:23085020).[UniProtKB/Swiss-Prot Function]

Protein Families: Druggable Genome

Product images:



Coomassie blue staining of purified SPC24 protein (Cat# [TP311241]). The protein was produced from HEK293T cells transfected with SPC24 cDNA clone (Cat# [RC211241]) using MegaTran 2.0 (Cat# [TT210002]).