

## Product datasheet for PH311236

### REXO2 (NM\_015523) Human Mass Spec Standard

#### Product data:

Product Type:	Mass Spec Standards
Description:	REXO2 MS Standard C13 and N15-labeled recombinant protein (NP_056338)
Species:	Human
Expression Host:	HEK293
Expression cDNA Clone or AA Sequence:	RC211236
Predicted MW:	26.8 kDa
Protein Sequence:	>RC211236 protein sequence Red=Cloning site Green=Tags(s)  MLGGSLSRLLRGVGGSHGRFGARGVREGGAAMAAGESMAQRMVWVDLEMTGLDIEKDQIEMAACLITDS DLNILAEGPNLIKQPDELLDSMSDWCKEHHGKSGLTKAVKESTITLQQAEYEFLSFVRQQTPPGLCPLA GNSVHEDKKFLDKYMPQFMKHLHYRIIDVSTVKELCRRWYPEEYEFAPKKAASHRALDDISESIKELQFY RNNIFKKKIDEKKRKIIENGENEKTVS  TRTRPLEQKLI SEEDLAANDILDYKDDDDKV
Tag:	C-Myc/DDK
Purity:	> 80% as determined by SDS-PAGE and Coomassie blue staining
Concentration:	>0.05 µg/µL as determined by microplate BCA method
Labeling Method:	Labeled with [U- <sup>13</sup> C <sub>6</sub> , <sup>15</sup> N <sub>4</sub> ]-L-Arginine and [U- <sup>13</sup> C <sub>6</sub> , <sup>15</sup> N <sub>2</sub> ]-L-Lysine
Buffer:	25 mM Tris-HCl, 100 mM glycine, pH 7.3
Storage:	Store at -80°C. Avoid repeated freeze-thaw cycles.
Stability:	Stable for 3 months from receipt of products under proper storage and handling conditions.
RefSeq:	<a href="#">NP_056338</a>
RefSeq Size:	1171
RefSeq ORF:	711
Synonyms:	CGI-114; REX2; RFN; SFN
Locus ID:	25996
UniProt ID:	<a href="#">Q9Y3B8</a>

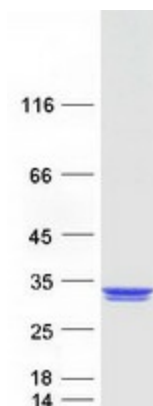


[View online »](#)

Cytogenetics: 11q23.2

**Summary:** This gene encodes a 3'-to-5' exonuclease specific for small (primarily 5 nucleotides or less in length) single-stranded RNA and DNA oligomers. This protein may have a role in DNA repair, replication, and recombination, and in RNA processing and degradation. It may also be involved in resistance of human cells to UV-C-induced cell death through its role in the DNA repair process. [provided by RefSeq, Nov 2011]

**Product images:**



Coomassie blue staining of purified REXO2 protein (Cat# [TP311236]). The protein was produced from HEK293T cells transfected with REXO2 cDNA clone (Cat# [RC211236]) using MegaTran 2.0 (Cat# [TT210002]).