

## Product datasheet for PH311235

### PIP3E (IPCEF1) (NM\_015553) Human Mass Spec Standard

#### Product data:

Product Type:	Mass Spec Standards
Description:	IPCEF1 MS Standard C13 and N15-labeled recombinant protein (NP_056368)
Species:	Human
Expression Host:	HEK293
Expression cDNA Clone or AA Sequence:	RC211235
Predicted MW:	49 kDa
Protein Sequence:	>RC211235 protein sequence Red=Cloning site Green=Tags(s)

MTSYMAIDGSALVPLRQKPRRKTQGFLTMSRRRISCKDLGHADCQGWLYKKKEKGSFSLSNKWKFFWVILK  
GSSLYWYSNQMAEKADGFVNLPDFTVERASECKKKHAFKISHPQIKTFYFAAENVQEMNVWLNKLGSAVI  
HQESTTKDEECYSESEQEDPEIAAETPPPPHASQTQSLTAQQASSSSPSLSGTSYSFSSELENTVKTPSSF  
PSSLKERQSLPDTVNSLSAAEDEGQPIITFAVQVHSPVPSEAGIHKALENSFVTSESGFLNSLSSDDTSS  
LSSNHDHLLVDPKPAAGSKIMDKKEETKVSSEDEMEKLYKSLEQASLSPLGDRRPSTKKELRKSFKRCKNP  
SINEKLNKIRTLNSTLKCKEHLAMINQLLDDPKLTARKYREWKVMNTLLIQDIYQQQRASPAPDDTDDT  
PQELKKSPSSPSVENS

TRTRPLEQKLISEEDLAANDILDYKDDDDKV

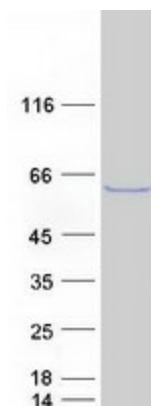
Tag:	C-Myc/DDK
Purity:	> 80% as determined by SDS-PAGE and Coomassie blue staining
Concentration:	>0.05 µg/µL as determined by microplate BCA method
Labeling Method:	Labeled with [U- <sup>13</sup> C <sub>6</sub> , <sup>15</sup> N <sub>4</sub> ]-L-Arginine and [U- <sup>13</sup> C <sub>6</sub> , <sup>15</sup> N <sub>2</sub> ]-L-Lysine
Buffer:	25 mM Tris-HCl, 100 mM glycine, pH 7.3
Storage:	Store at -80°C. Avoid repeated freeze-thaw cycles.
Stability:	Stable for 3 months from receipt of products under proper storage and handling conditions.
RefSeq:	<a href="#">NP_056368</a>
RefSeq Size:	6815
RefSeq ORF:	1311
Synonyms:	PIP3-E



[View online »](#)

Locus ID:	26034
UniProt ID:	<a href="#">Q8WWN9</a>
Cytogenetics:	6q25.2
Summary:	Enhances the promotion of guanine-nucleotide exchange by PSCD2 on ARF6 in a concentration-dependent manner.[UniProtKB/Swiss-Prot Function]

### Product images:



Coomassie blue staining of purified IPCEF1 protein (Cat# [TP311235]). The protein was produced from HEK293T cells transfected with IPCEF1 cDNA clone (Cat# [RC211235]) using MegaTran 2.0 (Cat# [TT210002]).