

Product datasheet for PH311220

EN2 (NM_001427) Human Mass Spec Standard

Product data:

Product Type:	Mass Spec Standards
Description:	EN2 MS Standard C13 and N15-labeled recombinant protein (NP_001418)
Species:	Human
Expression Host:	HEK293
Expression cDNA Clone or AA Sequence:	RC211220
Predicted MW:	34 kDa
Protein Sequence:	>RC211220 representing NM_001427 Red =Cloning site Green =Tags(s) MEENDPKPGEAAA AVEGQRQPESSPGGGSGGGSSPGEADTGRRRALMLPAVLQAPGNHQPHRITNFF IDNILRPEFGRRKDAGTCCAGAGGGRGGGAGGEGGASGAEGGGGAGGSEQLLGSGSREPRQNPCCAPGAG GPLPAAGSDSPGDGEGGSKTSLHGGAKKGGDPGGPLDGSLKARGLGGDL SVSSDSDSSQAGANLGAQP MLWPAWVYCTRYSDRPSSGPRSRKPKKKPNKEDKRPRTAFTAEQLQLKAEFQTNRYL TEQRRQSLAQE LSLNESQIKIWFQNKRAIKKATGNKNTLAVHMAQGLYNHSTTAKEGKSDSE TRTRPLEQKLI SEEDLAANDILDYKDDDDKV
Tag:	C-Myc/DDK
Purity:	> 80% as determined by SDS-PAGE and Coomassie blue staining
Concentration:	>0.05 µg/µL as determined by microplate BCA method
Labeling Method:	Labeled with [U- ¹³ C ₆ , ¹⁵ N ₄]-L-Arginine and [U- ¹³ C ₆ , ¹⁵ N ₂]-L-Lysine
Buffer:	25 mM Tris-HCl, 100 mM glycine, pH 7.3
Storage:	Store at -80°C. Avoid repeated freeze-thaw cycles.
Stability:	Stable for 3 months from receipt of products under proper storage and handling conditions.
RefSeq:	NP_001418
RefSeq Size:	3405
RefSeq ORF:	999
Locus ID:	2020
UniProt ID:	P19622



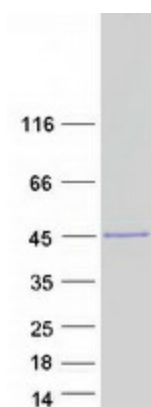
[View online »](#)

Cytogenetics: 7q36.3

Summary: Homeobox-containing genes are thought to have a role in controlling development. In *Drosophila*, the 'engrailed' (en) gene plays an important role during development in segmentation, where it is required for the formation of posterior compartments. Different mutations in the mouse homologs, En1 and En2, produced different developmental defects that frequently are lethal. The human engrailed homologs 1 and 2 encode homeodomain-containing proteins and have been implicated in the control of pattern formation during development of the central nervous system. [provided by RefSeq, Jul 2008]

Protein Families: Druggable Genome, ES Cell Differentiation/IPS

Product images:



Coomassie blue staining of purified EN2 protein (Cat# [TP311220]). The protein was produced from HEK293T cells transfected with EN2 cDNA clone (Cat# [RC211220]) using MegaTran 2.0 (Cat# [TT210002]).