

Product datasheet for PH311204

WNT16 (NM_057168) Human Mass Spec Standard

Product data:

Product Type:	Mass Spec Standards
Description:	WNT16 MS Standard C13 and N15-labeled recombinant protein (NP_476509)
Species:	Human
Expression Host:	HEK293
Expression cDNA Clone or AA Sequence:	RC211204
Predicted MW:	37.6 kDa
Protein Sequence:	>RC211204 representing NM_057168 Red=Cloning site Green=Tags(s)

MDRAALLGLARLCAWALLVLPYGAQGNMWWLGIASFVPEKLGCANLPLNSRQKELCKRKPYPYLLPSI
REGARLGIQECGSQFRHERWNCMITAAATTAPMGASPLFGYELSSGKTETAFIYAVMAAGLVHSVTRSCS
AGNMTECSCDRTLQNGGSASEGWHWGCSDDVQYGMWFSRKFLDFPIGNTTGKENKVLLAMNLHNNEAGR
QAVAKLMSVDCRCHGVSGSCAVKTCWKTMSFEKIGHLLKDKYENSIQISDKTKRKMRRREKDRKIPIH
KDDLLYVNKSPNYCVEDKKGIPGTQGRECNRTSEGADGCNLLCCGRGYNTHVVRHVERCECKFIWCCYV
RCRRCESMTDVHTCK

TRTRPLEQKLI SEEDLAANDILDYKDDDDKV

Tag:	C-Myc/DDK
Purity:	> 80% as determined by SDS-PAGE and Coomassie blue staining
Concentration:	>0.05 µg/µL as determined by microplate BCA method
Labeling Method:	Labeled with [U- ¹³ C ₆ , ¹⁵ N ₄]-L-Arginine and [U- ¹³ C ₆ , ¹⁵ N ₂]-L-Lysine
Buffer:	25 mM Tris-HCl, 100 mM glycine, pH 7.3
Storage:	Store at -80°C. Avoid repeated freeze-thaw cycles.
Stability:	Stable for 3 months from receipt of products under proper storage and handling conditions.
RefSeq:	<u>NP_476509</u>
RefSeq Size:	3132
RefSeq ORF:	1095
Locus ID:	51384
UniProt ID:	<u>Q9UBV4</u>



[View online »](#)

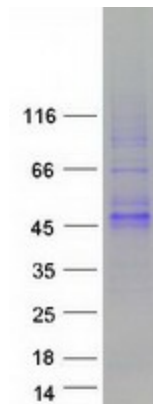
Cytogenetics: 7q31.31

Summary: The WNT gene family consists of structurally related genes which encode secreted signaling proteins. These proteins have been implicated in oncogenesis and in several developmental processes, including regulation of cell fate and patterning during embryogenesis. This gene is a member of the WNT gene family. It contains two transcript variants diverging at the 5' termini. These two variants are proposed to be the products of separate promoters and not to be splice variants from a single promoter. They are differentially expressed in normal tissues, one of which (variant 2) is expressed at significant levels only in the pancreas, whereas another one (variant 1) is expressed more ubiquitously with highest levels in adult kidney, placenta, brain, heart, and spleen. [provided by RefSeq, Jul 2008]

Protein Families: Secreted Protein, Transmembrane

Protein Pathways: Basal cell carcinoma, Hedgehog signaling pathway, Melanogenesis, Pathways in cancer, Wnt signaling pathway

Product images:



Coomassie blue staining of purified WNT16 protein (Cat# [TP311204]). The protein was produced from HEK293T cells transfected with WNT16 cDNA clone (Cat# [RC211204]) using MegaTran 2.0 (Cat# [TT210002]).