

Product datasheet for PH311200

CYP2R1 (NM_024514) Human Mass Spec Standard

Product data:

Product Type:	Mass Spec Standards
Description:	CYP2R1 MS Standard C13 and N15-labeled recombinant protein (NP_078790)
Species:	Human
Expression Host:	HEK293
Expression cDNA Clone or AA Sequence:	RC211200
Predicted MW:	57.4 kDa
Protein Sequence:	>RC211200 protein sequence Red=Cloning site Green=Tags(s)

MWKLWRAEEGAAALGGALFLLL FALGVRQLLKQRRPMGFPPGPPGLPFIGNIYSLAASSELPHVYMRKQS
QVYGEIFSLDLGGISTVVLNGYDVVKECLVHQSEIFADRPCLPLFMKMTKMGGLLNSRYGRGWVDRRLA
VNSFRYFGYGQKSFESKILEETKFFNDIETYGKRPDFKQLITNAVSNITNLIIFGERFTYEDTDFQHM
IELFSEVELAASASVFLYNAPFWIGILPFGKHQQLFRNAAVVYDFLSRLIEKASVNRKPQLPQHFDAY
LDEMDQGKNDPSSTFSKENLIFSVGELIIAGTETTTNVLRWAILFMALYPNIQGGVQKEIDLIMGPNGKP
SWDDKCKMPYTEAVLHEVLRFCNIVPLGIFHATSEDAVVRGYSIPKGTTVITNLYSVHFDEKYWRDPEVF
HPERFLDSSGYFAKKEALVPFSLGRRHCLGEHLARMEMFLFFTALLQRFHLHFPHELVPDLKPRLGMTLQ
PQPYLICAERR

TRTRPLEQKLI SEEDLAANDILDYKDDDDKV

Tag:	C-Myc/DDK
Purity:	> 80% as determined by SDS-PAGE and Coomassie blue staining
Concentration:	>0.05 µg/µL as determined by microplate BCA method
Labeling Method:	Labeled with [U- ¹³ C ₆ , ¹⁵ N ₄]-L-Arginine and [U- ¹³ C ₆ , ¹⁵ N ₂]-L-Lysine
Buffer:	25 mM Tris-HCl, 100 mM glycine, pH 7.3
Storage:	Store at -80°C. Avoid repeated freeze-thaw cycles.
Stability:	Stable for 3 months from receipt of products under proper storage and handling conditions.
RefSeq:	NP_078790
RefSeq Size:	1633
RefSeq ORF:	1503



[View online »](#)

Locus ID: 120227

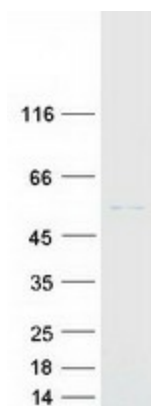
UniProt ID: [Q6VVX0](#)

Cytogenetics: 11p15.2

Summary: This gene encodes a member of the cytochrome P450 superfamily of enzymes. The cytochrome P450 proteins are monooxygenases which catalyze many reactions involved in drug metabolism and synthesis of cholesterol, steroids and other lipids. This enzyme is a microsomal vitamin D hydroxylase that converts vitamin D into the active ligand for the vitamin D receptor. A mutation in this gene has been associated with selective 25-hydroxyvitamin D deficiency. [provided by RefSeq, Jul 2008]

Protein Families: Druggable Genome, P450, Transmembrane

Product images:



Coomassie blue staining of purified CYP2R1 protein (Cat# [TP311200]). The protein was produced from HEK293T cells transfected with CYP2R1 cDNA clone (Cat# [RC211200]) using MegaTran 2.0 (Cat# [TT210002]).