

## Product datasheet for PH311175

### TUBA8 (NM\_018943) Human Mass Spec Standard

#### Product data:

Product Type:	Mass Spec Standards
Description:	TUBA8 MS Standard C13 and N15-labeled recombinant protein (NP_061816)
Species:	Human
Expression Host:	HEK293
Expression cDNA Clone or AA Sequence:	RC211175
Predicted MW:	50.1 kDa
Protein Sequence:	>RC211175 protein sequence Red=Cloning site Green=Tags(s)

MRECISVHVGQAGVQIGNACWELFCLEHGIQADGTFDAQASKINDDSFTTFFSETGNGKHVPRAVMIDL  
EPTVVDEVVRAGTYRQLFHPEQLITGKEDAANNYARGHYTVGKESIDLVLDRIRKLTDACSLQGFLIFHS  
FGGGTGSFGFTSLLMERLSLDYGGKSKLEFAIYPAPQVSTAVVEPYNSILTTHTTLEHSDCAFMDNEAIY  
DICRRNLDIERPTYTNLNLISQIVSSITASLRFDGALNVDLTFQTNLVPYPRIHFPLVTYAPIISAEK  
AYHEQLSVAEITSSCFEPNSQMVKCDPRHGKYMCCMLYRGDVVPKDVNVAIAAIKTKRTIQFVDWCPTG  
FKVGINYQPPTVVPGGDLAKVQRAVCMLSNNTTAAEAWARLDHKFDLMYAKRAVHVWYVGEEMEEGEFSE  
AREDLAALAEKDYEEVGTDSFEEENEGEF

TRTRPLEQKLI SEEDLAANDILDYKDDDDKV

Tag:	C-Myc/DDK
Purity:	> 80% as determined by SDS-PAGE and Coomassie blue staining
Concentration:	>0.05 µg/µL as determined by microplate BCA method
Labeling Method:	Labeled with [U- <sup>13</sup> C <sub>6</sub> , <sup>15</sup> N <sub>4</sub> ]-L-Arginine and [U- <sup>13</sup> C <sub>6</sub> , <sup>15</sup> N <sub>2</sub> ]-L-Lysine
Buffer:	25 mM Tris-HCl, 100 mM glycine, pH 7.3
Storage:	Store at -80°C. Avoid repeated freeze-thaw cycles.
Stability:	Stable for 3 months from receipt of products under proper storage and handling conditions.
RefSeq:	<u>NP_061816</u>
RefSeq Size:	2124
RefSeq ORF:	1347
Synonyms:	CDCBM8; TUBAL2



[View online »](#)

Locus ID: 51807

UniProt ID: [Q9NY65](#)

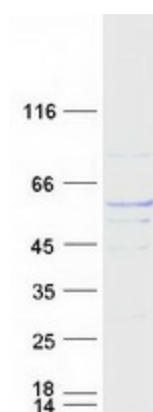
Cytogenetics: 22q11.21

**Summary:** This gene encodes a member of the alpha tubulin protein family. Alpha tubulins are one of two core protein families (alpha and beta tubulins) that heterodimerize and assemble to form microtubules. Mutations in this gene are associated with polymicrogyria and optic nerve hypoplasia. Alternate splicing results in multiple transcript variants. [provided by RefSeq, Jul 2010]

**Protein Families:** Druggable Genome

**Protein Pathways:** Gap junction, Pathogenic Escherichia coli infection

### Product images:



Coomassie blue staining of purified TUBA8 protein (Cat# [TP311175]). The protein was produced from HEK293T cells transfected with TUBA8 cDNA clone (Cat# [RC211175]) using MegaTran 2.0 (Cat# [TT210002]).