

Product datasheet for PH311169

Interferon alpha 8 (IFNA8) (NM_002170) Human Mass Spec Standard

Product data:

Product Type:	Mass Spec Standards
Description:	IFNA8 MS Standard C13 and N15-labeled recombinant protein (NP_002161)
Species:	Human
Expression Host:	HEK293
Expression cDNA Clone or AA Sequence:	RC211169
Predicted MW:	22 kDa
Protein Sequence:	>RC211169 protein sequence Red=Cloning site Green=Tags(s) MALT FYLLVALV VLSYKSFSSLGCDLPQTHSLGNRRALILLAQMRRISPF SCLKDRHDFEFPQEEFDDKQ FQKAQAI SVLHEMIQQT FNLFSTKDSSAALDETL LDEFYIELDQQLNDLESCVMQEVGVIESPLMYEDSI LAVRKYFQRITLYL TEKKYSSCAWEV VRAEIMRSFSL SINLQKRLKSKE TRTRPLEQKLI SEEDLAANDILDYKDDDDKV
Tag:	C-Myc/DDK
Purity:	> 80% as determined by SDS-PAGE and Coomassie blue staining
Concentration:	>0.05 µg/µL as determined by microplate BCA method
Labeling Method:	Labeled with [U- ¹³ C ₆ , ¹⁵ N ₄]-L-Arginine and [U- ¹³ C ₆ , ¹⁵ N ₂]-L-Lysine
Buffer:	25 mM Tris-HCl, 100 mM glycine, pH 7.3
Storage:	Store at -80°C. Avoid repeated freeze-thaw cycles.
Stability:	Stable for 3 months from receipt of products under proper storage and handling conditions.
RefSeq:	<u>NP_002161</u>
RefSeq Size:	1039
RefSeq ORF:	567
Synonyms:	IFN-alphaB
Locus ID:	3445
UniProt ID:	<u>P32881</u>



[View online »](#)

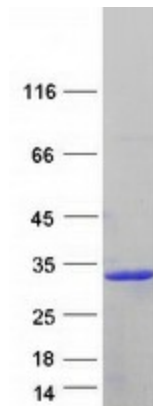
Cytogenetics: 9p21.3

Summary: Produced by macrophages, IFN-alpha have antiviral activities. Interferon stimulates the production of two enzymes: a protein kinase and an oligoadenylate synthetase.
[UniProtKB/Swiss-Prot Function]

Protein Families: Druggable Genome, Secreted Protein

Protein Pathways: Antigen processing and presentation, Autoimmune thyroid disease, Cytokine-cytokine receptor interaction, Cytosolic DNA-sensing pathway, Jak-STAT signaling pathway, Natural killer cell mediated cytotoxicity, Regulation of autophagy, RIG-I-like receptor signaling pathway, Toll-like receptor signaling pathway

Product images:



Coomassie blue staining of purified IFNA8 protein (Cat# [TP311169]). The protein was produced from HEK293T cells transfected with IFNA8 cDNA clone (Cat# [RC211169]) using MegaTran 2.0 (Cat# [TT210002]).