

Product datasheet for PH311163

PTPRS (NM_130853) Human Mass Spec Standard

Product data:

Product Type:	Mass Spec Standards
Description:	PTPRS MS Standard C13 and N15-labeled recombinant protein (NP_570923)
Species:	Human
Expression Host:	HEK293
Expression cDNA Clone or AA Sequence:	RC211163
Predicted MW:	168.4 kDa
Protein Sequence:	>RC211163 protein sequence Red=Cloning site Green=Tags(s)

MAPTWGPMVSVVGPMLLVLLVGGCAAEPPRFIPEKPDQIGVSGGVASFVCQATGDPKPRVTWNKKG
KKVNSQRFETIEFDESAGAVLRIQPLRTRPDENVYECVAQNSVGEITVHAKLTVLREDQLPSGFNIDMG
PQLKVVTRTRTATMLCAASGNPDPEITWFKDFLPVDPASNGRIKQLRSGALQIESSEETDQGYECVAT
NSAGVRYSSPANLYVRVRRVAPRFSILPMSHEIMPGGNVNITCVAVGSPMPYVWQGAEDLTPEDDMPV
GRNVLELTDVKDSANYTCVAMSSLVIEAVAQITVKS LKAPGTPMVTENTATSITITWDSGNPDVSY
VIEYKSKSQDGPYQIKEDITTTTRYSIGGLSPNSEYEWVSAVNSIGQPPSESVVTRTGEQAPASAPRNV
QARMLSATMIVQWEEPVEPNGLIRGYRVYYTMEPEHPVGNWQKHNVDSSLTTVGSLLLEDETYTVRVL
FTSVGDGPLSDPIQVKTQQGVGPQPMNLRAEARSETITLSWSPPRQESI IKYELLFREGDHGREVGRTF
DPTTSYVVEDLKPNTYAFRLAARSPQGLGAFTPVVRQRTLQSI SPKNFKVKMIMKTSVLLSWEFDPNYN
SPTPYKIQYNGLTLDVDGRTTKLITHLKPHTFYNFVLTNRGSSLGGLQQTVAWTAFNLLNGKPSVAPK
PDADGFI MVYLPDQSPVPVQSYFIVMVPLRKS RGGQFL TPLGSPEDMDLEELIQDISRLQRRSLRHSRQ
LEVPRPYIAARF SVLPPTFHGDKQYGGFDNRGLEPGHRYVLFVLA VLKQSEPTFAASPFSDPFQLDNP
DPQPIVDGEEGLI WIGPVLAVVFIICIVIAILLYKNKPD SKRKDSEPRTKCLLNADLAPHHKDPVEM
RRINFQTPGML SHPPIIADMAEHTERL KANDSLKLSQEYESIDPGQQFTWEHSNLEVNKPKNRYANVIA
YDHSRVLQPIEGIMGSDYINANYVDG YRRQNYIATQGPLPETFGDFWRMVWEQRSATIVMMTRLEEK
RIKCDQYWPNRGTETYGF IQVTLTLDI ELATFCVRTFSLHKNGSSEKREVRQFQTAWPDHGVPEYPTPF
LAFLLRRVKT CNPPDAGPIVHCSAGVGR TGCFIVIDAMLERIKPEKTVDVYGHVTLMRSQRNYMVQTEDQ
YSFIHEALLEAVGCGNTEVPARSLYAYIQKLAQVEPGEHVTGMELEFKRLANSKAHTSRFISANLPCNKF
KNRLVNIMPYESTRVCLQPIRGVEGSDYINASFIDGYRQQKAYIATQGPLAETTEDFWRMLWENNSTIVV
MLTKLREMGREKCHQYWP AERSARYQYFVVDPM AEYNMPQYILREFKVT DARDGQSRTVRQFQFTDWPEQ
GVPKSGEGFIDF IGQVHKTKEQFGDGPISVHCSAGVGR TGVFITLSIVLERMR YEGVVDIFQTVKMLRT
QRPAMVQTEDEYQFCYQA ALEYLGSFDHYAT

SGP TRTRPLEQKLI SEEDLAANDILDYKDDDDKV

Tag:	C-Myc/DDK
Purity:	> 80% as determined by SDS-PAGE and Coomassie blue staining



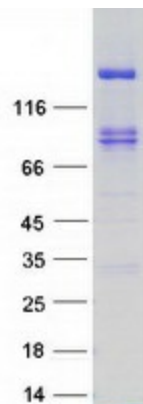
[View online »](#)

Concentration:	>0.05 µg/µL as determined by microplate BCA method
Labeling Method:	Labeled with [U- 13C6, 15N4]-L-Arginine and [U- 13C6, 15N2]-L-Lysine
Buffer:	25 mM Tris-HCl, 100 mM glycine, pH 7.3
Storage:	Store at -80°C. Avoid repeated freeze-thaw cycles.
Stability:	Stable for 3 months from receipt of products under proper storage and handling conditions.
RefSeq:	NP_570923
RefSeq Size:	6006
RefSeq ORF:	4503
Synonyms:	PTPSIGMA; R-PTP-S; R-PTP-sigma
Locus ID:	5802
UniProt ID:	Q13332 , Q8NHS7 , Q59FX6
Cytogenetics:	19p13.3

Summary: The protein encoded by this gene is a member of the protein tyrosine phosphatase (PTP) family. PTPs are known to be signaling molecules that regulate a variety of cellular processes including cell growth, differentiation, mitotic cycle, and oncogenic transformation. This PTP contains an extracellular region, a single transmembrane segment and two tandem intracytoplasmic catalytic domains, and thus represents a receptor-type PTP. The extracellular region of this protein is composed of multiple Ig-like and fibronectin type III-like domains. Studies of the similar gene in mice suggested that this PTP may be involved in cell-cell interaction, primary axonogenesis, and axon guidance during embryogenesis. This PTP has been also implicated in the molecular control of adult nerve repair. Four alternatively spliced transcript variants, which encode distinct proteins, have been reported. [provided by RefSeq, Jul 2008]

Protein Families: Druggable Genome, Phosphatase, Transmembrane

Product images:



Coomassie blue staining of purified PTPRS protein (Cat# [TP311163]). The protein was produced from HEK293T cells transfected with PTPRS cDNA clone (Cat# [RC211163]) using MegaTran 2.0 (Cat# [TT210002]).