

Product datasheet for PH311158

EHD1 (NM_006795) Human Mass Spec Standard

Product data:

Product Type:	Mass Spec Standards
Description:	EHD1 MS Standard C13 and N15-labeled recombinant protein (NP_006786)
Species:	Human
Expression Host:	HEK293
Expression cDNA Clone or AA Sequence:	RC211158
Predicted MW:	60.6 kDa
Protein Sequence:	>RC211158 protein sequence Red=Cloning site Green=Tags(s)

MFSWVSKDARRKKEPELFQTVAEGLRQLYAQKLLPLEEHYRFHEFHSPALEDADFDNKPMVLLVGQYSTG
KTTFIRHLIEQDFPQMRIGPEPTTDSFIAVMHGPTGVVPGNALVVDPRRPFKLNFAFGNAFLNRFMCAQ
LPNPVLDSISIIDTPGILSGEKQRISRGYDFAAVLEWFAERVDRIILLFDAHKLDISDEFSEVIKALKKNH
EDKIRVVLNKADQIETQQLMRVYGALMWSLGGKIINTPEVVRVYIGSFWSHPLLIPDNRKLFEEQDLFK
DIQSLPRNAALRKLNDLIKRRARAKVHAYIISLKKEMPVNFVFGKESKKELVNNLGEIYQKIEREHQISP
GDFPSLRKMQELLQTQDFSKFQALKPKLLDVTDDMLANDIARLMVMVRQEESLMPQVVKGGAFDGTMMG
PFGHGYGEGAGEGIDDVEWVVGKDKPTYDEIFYTLSPVNGKITGANAKKEMVSKLPNTVLGKIWKLADV
DKDGLLDDEEFALANHLIKVKLEGHELPA DLPPHLVPPSKRRHE

SGPTRRTRPLEQKLI SEEDLAANDILDYKDDDDKV

Tag:	C-Myc/DDK
Purity:	> 80% as determined by SDS-PAGE and Coomassie blue staining
Concentration:	>0.05 µg/µL as determined by microplate BCA method
Labeling Method:	Labeled with [U- ¹³ C ₆ , ¹⁵ N ₄]-L-Arginine and [U- ¹³ C ₆ , ¹⁵ N ₂]-L-Lysine
Buffer:	25 mM Tris-HCl, 100 mM glycine, pH 7.3
Storage:	Store at -80°C. Avoid repeated freeze-thaw cycles.
Stability:	Stable for 3 months from receipt of products under proper storage and handling conditions.
RefSeq:	NP_006786
RefSeq Size:	3533
RefSeq ORF:	1602



[View online »](#)

Synonyms: H-PAST; HPAST1; PAST; PAST1

Locus ID: 10938

UniProt ID: [Q9H4M9](#), [B2R5U3](#)

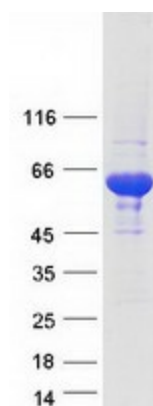
Cytogenetics: 11q13.1

Summary: This gene belongs to a highly conserved gene family encoding EPS15 homology (EH) domain-containing proteins. The protein-binding EH domain was first noted in EPS15, a substrate for the epidermal growth factor receptor. The EH domain has been shown to be an important motif in proteins involved in protein-protein interactions and in intracellular sorting. The protein encoded by this gene is thought to play a role in the endocytosis of IGF1 receptors. Alternatively spliced transcript variants have been found for this gene. [provided by RefSeq, Sep 2013]

Protein Families: Druggable Genome

Protein Pathways: Endocytosis

Product images:



Coomassie blue staining of purified EHD1 protein (Cat# [TP311158]). The protein was produced from HEK293T cells transfected with EHD1 cDNA clone (Cat# [RC211158]) using MegaTran 2.0 (Cat# [TT210002]).