

Product datasheet for PH311152

BCL2L2 (NM_004050) Human Mass Spec Standard

Product data:

Product Type:	Mass Spec Standards
Description:	BCL2L2 MS Standard C13 and N15-labeled recombinant protein (NP_004041)
Species:	Human
Expression Host:	HEK293
Expression cDNA Clone or AA Sequence:	RC211152
Predicted MW:	20.8 kDa
Protein Sequence:	>RC211152 protein sequence Red =Cloning site Green =Tags(s) MATPASAPDTRALVADFGYKLRQKGYVCGAGPGEGPAADPLHQAMRAAGDEFETRFRRTFSDLAAQLHV TPGSAQQRFTQVSDELFQGGPNWGRLVAFFVFGAALCAESVNKEMEPLVGQVQEWVAYLETRLADWIHS SGGWAETFALYGDGAL EEARRLREGN WASVRTVLTGAVALGALVTVGAF FASK TR TRPLEQKLI SEEDLAANDILDYKDDDDKV
Tag:	C-Myc/DDK
Purity:	> 80% as determined by SDS-PAGE and Coomassie blue staining
Concentration:	>0.05 µg/µL as determined by microplate BCA method
Labeling Method:	Labeled with [U- 13C6, 15N4]-L-Arginine and [U- 13C6, 15N2]-L-Lysine
Buffer:	25 mM Tris-HCl, 100 mM glycine, pH 7.3
Storage:	Store at -80°C. Avoid repeated freeze-thaw cycles.
Stability:	Stable for 3 months from receipt of products under proper storage and handling conditions.
RefSeq:	<u>NP_004041</u>
RefSeq Size:	3621
RefSeq ORF:	579
Synonyms:	BCL-W; BCL2-L-2; BCLW; PPP1R51
Locus ID:	599
UniProt ID:	<u>Q92843</u>



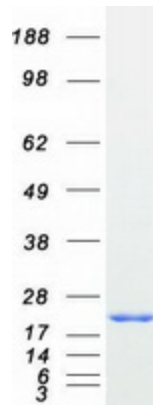
[View online »](#)

Cytogenetics: 14q11.2

Summary: This gene encodes a member of the BCL-2 protein family. The proteins of this family form hetero- or homodimers and act as anti- and pro-apoptotic regulators. Expression of this gene in cells has been shown to contribute to reduced cell apoptosis under cytotoxic conditions. Studies of the related gene in mice indicated a role in the survival of NGF- and BDNF-dependent neurons. Mutation and knockout studies of the mouse gene demonstrated an essential role in adult spermatogenesis. Alternative splicing results in multiple transcript variants. Read-through transcription also exists between this gene and the neighboring downstream PABPN1 (poly(A) binding protein, nuclear 1) gene. [provided by RefSeq, Dec 2010]

Protein Families: Druggable Genome, Transmembrane

Product images:



Coomassie blue staining of purified BCL2L2 protein (Cat# [TP311152]). The protein was produced from HEK293T cells transfected with BCL2L2 cDNA clone (Cat# [RC211152]) using MegaTran 2.0 (Cat# [TT210002]).