

Product datasheet for PH311147

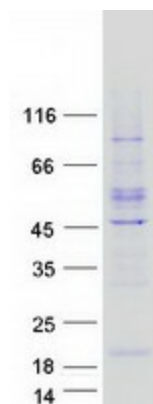
YPEL4 (NM_145008) Human Mass Spec Standard

Product data:

Product Type:	Mass Spec Standards
Description:	YPEL4 MS Standard C13 and N15-labeled recombinant protein (NP_659445)
Species:	Human
Expression Host:	HEK293
Expression cDNA Clone or AA Sequence:	RC211147
Predicted MW:	14.3 kDa
Protein Sequence:	>RC211147 protein sequence Red=Cloning site Green=Tags(s) MPSCDPGPGPAACLPTKTFRSYLPRCHRTYSCVHCRAHLAKHDELISKSFQGSGRAYLFNSVNVGCGPA EQRLLLTGLHSVADIFCESCKTTLGWKYEQAFETSQKYKEGKYIEMSHMKDNGWD TRTRPLEQKLISEEDLAANDILDYKDDDDKV
Tag:	C-Myc/DDK
Purity:	> 80% as determined by SDS-PAGE and Coomassie blue staining
Concentration:	>0.05 µg/µL as determined by microplate BCA method
Labeling Method:	Labeled with [U- 13C6, 15N4]-L-Arginine and [U- 13C6, 15N2]-L-Lysine
Buffer:	25 mM Tris-HCl, 100 mM glycine, pH 7.3
Storage:	Store at -80°C. Avoid repeated freeze-thaw cycles.
Stability:	Stable for 3 months from receipt of products under proper storage and handling conditions.
RefSeq:	NP_659445
RefSeq Size:	1731
RefSeq ORF:	381
Locus ID:	219539
UniProt ID:	Q96NS1 , A0A024R4Y8
Cytogenetics:	11q12.1



[View online »](#)

Product images:

Coomassie blue staining of purified YPEL4 protein (Cat# [TP311147]). The protein was produced from HEK293T cells transfected with YPEL4 cDNA clone (Cat# [RC211147]) using MegaTran 2.0 (Cat# [TT210002]).