

Product datasheet for PH311142

RPS6KC1 (NM_012424) Human Mass Spec Standard

Product data:

Product Type:	Mass Spec Standards
Description:	RPS6KC1 MS Standard C13 and N15-labeled recombinant protein (NP_036556)
Species:	Human
Expression Host:	HEK293
Expression cDNA Clone or AA Sequence:	RC211142
Predicted MW:	118.7 kDa
Protein Sequence:	>RC211142 protein sequence Red=Cloning site Green=Tags(s)

MTSYRERSADLARFYTVTEPQRHPRGYTVYKVTARVVSRRNPEDVQEIIIVWKRYSDFKKLHKELWQIHKN
LFRHSELFPFPAKGI VFGFRFDETVIEERRQCAEDLLQFSANIPALYNSKQLEDFFKGGIINDSSELIGPA
EAHSDSLIDTFPECSTEGFSSDSDLVSLTVDVDSLAELEDDGMASNQNSPIRTFGLNLSDDSSALGAVASD
SEQSKTEEERESRSLFPGSLKPKLGKRDYLEKAGELIKLALKKEEEDDYEAASDFYRKGVDLLLEGVQGE
SSPTRREAVKRRTAEYLMRAESISSLYGKPLDDVVSQPPGSLSSRPLWNLRSAPAEELKAFRVLGVIDKVL
LVM DTRTEQTFILKGLRKSSEYSRNRKTIIPRCVPMVCLHKYIISEESVFLVLQHAEGGKLSYISKFL
NRSPEESFDI KEVKKPTLAKVHLQQPTSSPQDSSSFESRSGSDGGSMLKALPLKSSLTPSSQDDSNQEDDG
QDSSPKWPDSSGSSSEEECTTSYLTL CNEYGQEKIEPGSLNEEPFMKTEGNGVDTKAIKSFPAAHLAADS
PSTQLRAHELKFFPNDDPEAVSSPRTSDLSRSKNSPMEFFRIDSKDSASELLGLDFGEKLYSLKSEPLK
PFFTL PDGDSASRSFNTSESKVEFKAQDTISRGSDDSVPVISFKDAAFDDVSGTDEGRPDLLVNLPELE
STREAAAMGPTKFTQTNIGIENKLEAPDVLCLRLSTEQCQAHEEKGIEELSDPSGPKSYSITEKHQAQ
EDPRMLFVAAVDHSSSGDMSLLPSSDPKFQGLGVVESAVTANNTTEESLFRICSPLSGAN EYIASTDTLKT
EEVLLFTDQTDLLAKEEPTSLFQRDSETKGESGLVLEGDKEIHQIFEDLDKLLALASRFYIPEGCIQRWA
AEMVVALDALHREGIVCRDLNPNNILLNDRGHIQLTYFSRWSEVEDSCSDAIERMYCAPEVGAIETEETE
ACDWWSLGA VLFELLTGKTLVECHPAGINTHTTLNMPECVSEEARSLIQQLLQFNPLERL GAGVAGVEDI
KSHPPFFTPVDWAELMR

TRTRPLEQKLISEEDLAANDILDYKDDDDKV

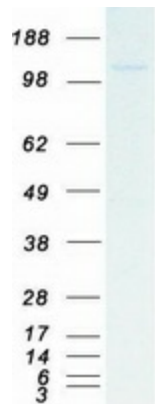
Tag:	C-Myc/DDK
Purity:	> 80% as determined by SDS-PAGE and Coomassie blue staining
Concentration:	>0.05 µg/µL as determined by microplate BCA method
Labeling Method:	Labeled with [U- ¹³ C ₆ , ¹⁵ N ₄]-L-Arginine and [U- ¹³ C ₆ , ¹⁵ N ₂]-L-Lysine
Buffer:	25 mM Tris-HCl, 100 mM glycine, pH 7.3



[View online »](#)

Storage:	Store at -80°C. Avoid repeated freeze-thaw cycles.
Stability:	Stable for 3 months from receipt of products under proper storage and handling conditions.
RefSeq:	NP_036556
RefSeq Size:	4219
RefSeq ORF:	3198
Synonyms:	humS6PKh1; RPK118; RSKL1; S6K-delta-1; S6PKh1
Locus ID:	26750
UniProt ID:	Q96S38
Cytogenetics:	1q32.3
Summary:	Sphingosine kinase catalyzes the formation of sphingosine 1 phosphate, a lipid cellular messenger. The protein encoded by this gene can bind to sphingosine kinase and to phosphatidylinositol 3-phosphate, suggesting a role in sphingosine 1 phosphate signaling. The encoded protein can also bind to peroxiredoxin-3 and may help transport it to mitochondria. [provided by RefSeq, Mar 2017]
Protein Families:	Druggable Genome, Protein Kinase

Product images:



Coomassie blue staining of purified RPS6KC1 protein (Cat# [TP311142]). The protein was produced from HEK293T cells transfected with RPS6KC1 cDNA clone (Cat# [RC211142]) using MegaTran 2.0 (Cat# [TT210002]).