

Product datasheet for PH311127

gamma Tubulin (TUBG2) (NM_016437) Human Mass Spec Standard

Product data:

Product Type:	Mass Spec Standards
Description:	TUBG2 MS Standard C13 and N15-labeled recombinant protein (NP_057521)
Species:	Human
Expression Host:	HEK293
Expression cDNA Clone or AA Sequence:	RC211127
Predicted MW:	51.1 kDa
Protein Sequence:	>RC211127 protein sequence Red=Cloning site Green=Tags(s)
	MPREIITLQLGQCGNQIGFEFWKQLCAEHGISPEGIVEEFATEGTDKDVFFYQADDEHYIPRAVLLDLE PRVIHSILNSPYAKLYNPENIYLSEHGGGAGNNWASGFSQGEKIHEDIFDIIDREADGSDSLEGFVLC IAGGTGSLGSLYLLERLNDRYPKKLVQYTSVFPYQDEMSDVVVQPYNSLLTLKRLTQNADCVVLDNTAL NRIATDRLHIQNPSFSQINQLVSTIMSASTTLRYPGYMNNDLIGLIASLIPTPRLHFLMTGYTPLTTDQ SVASVRKTTVLDVMRLLQPKNVMVSTGRDRQTNHCYIAILNIIQGEVDPTQVHKSLQRIRERKLANFIP WGPASIQVALSRKSPYLPSAHRVSGLMANHTSISSLFESSCQQFDKLRKRAFLEQFRKEDMFKDNFDE MDRSREVVQELIDEYHAATQPDYISWGTEQ
	TRTRPLEQKLISEEDLAANDILDYKDDDDKV
Tag:	C-Myc/DDK
Purity:	> 80% as determined by SDS-PAGE and Coomassie blue staining
Concentration:	>0.05 µg/µL as determined by microplate BCA method
Labeling Method:	Labeled with [U- ¹³ C ₆ , ¹⁵ N ₄]-L-Arginine and [U- ¹³ C ₆ , ¹⁵ N ₂]-L-Lysine
Buffer:	25 mM Tris-HCl, 100 mM glycine, pH 7.3
Storage:	Store at -80°C. Avoid repeated freeze-thaw cycles.
Stability:	Stable for 3 months from receipt of products under proper storage and handling conditions.
RefSeq:	<u>NP_057521</u>
RefSeq Size:	1841
RefSeq ORF:	1353
Locus ID:	27175



[View online »](#)

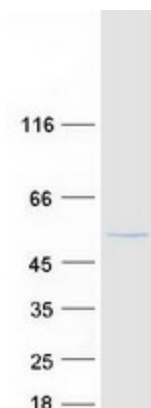
UniProt ID: [Q9NRH3](#)

Cytogenetics: 17q21.2

Summary: Tubulin is the major constituent of microtubules. The gamma chain is found at microtubule organizing centers (MTOC) such as the spindle poles or the centrosome. Pericentriolar matrix component that regulates alpha/beta chain minus-end nucleation, centrosome duplication and spindle formation (By similarity).[UniProtKB/Swiss-Prot Function]

Protein Families: Druggable Genome

Product images:



Coomassie blue staining of purified TUBG2 protein (Cat# [TP311127]). The protein was produced from HEK293T cells transfected with TUBG2 cDNA clone (Cat# [RC211127]) using MegaTran 2.0 (Cat# [TT210002]).