

Product datasheet for PH311122

PCPTP1 (PTPRR) (NM_130846) Human Mass Spec Standard

Product data:

Product Type:	Mass Spec Standards
Description:	PTPRR MS Standard C13 and N15-labeled recombinant protein (NP_570897)
Species:	Human
Expression Host:	HEK293
Expression cDNA Clone or AA Sequence:	RC211122
Predicted MW:	46.6 kDa
Protein Sequence:	>RC211122 protein sequence Red=Cloning site Green=Tags(s)

MILYRLKERFQLSLRQDKEKNQEIHLSPITLQPALSEAKTVHSMVQPEQAPKVLNVVDPQGRGAPEIRA
TTATSVCPSPFKMKPIGLQERRGSNVSLLDMSSLGNIEPFVSIPTPREKVAMEYLQSASRILTRSQRD
VVASSHLLQSEFMEIPMNFVDPKEIDIPRHGTKNRYKTILPNPLSRVCLRPKNVTDLSLTYINANYIRGY
SGKEKAFIATQGPMINTVDDFWQMVMWQEDSPVIVMITKLKEKNEKCVLYWPEKRGYIGKVEVLVISVNEC
DNYTIRNLVVKQGSHTQHVKHYWYTSWPDHKTPDSAQPLLQLMLDVEEDRLASQGRGPVVVHCSAGIGRT
GCFIATSIGCQQLKEEGVVDALSIVCQLRMDRGGMVQTSEQYEFVHHALCLYESRLSAETVQ

TRTRPLEQKLISEEDLAANDILDYKDDDDKV

Tag:	C-Myc/DDK
Purity:	> 80% as determined by SDS-PAGE and Coomassie blue staining
Concentration:	>0.05 µg/µL as determined by microplate BCA method
Labeling Method:	Labeled with [U- ¹³ C ₆ , ¹⁵ N ₄]-L-Arginine and [U- ¹³ C ₆ , ¹⁵ N ₂]-L-Lysine
Buffer:	25 mM Tris-HCl, 100 mM glycine, pH 7.3
Storage:	Store at -80°C. Avoid repeated freeze-thaw cycles.
Stability:	Stable for 3 months from receipt of products under proper storage and handling conditions.
RefSeq:	<u>NP_570897</u>
RefSeq Size:	2782
RefSeq ORF:	1236
Synonyms:	EC-PTP; PCPTP1; PTP-SL; PTPBR7; PTPRQ
Locus ID:	5801



[View online »](#)

UniProt ID: [Q15256](#), [Q7Z2V8](#)

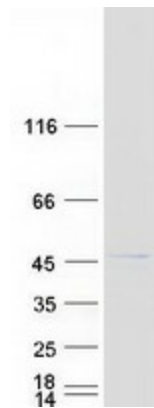
Cytogenetics: 12q15

Summary: The protein encoded by this gene is a member of the protein tyrosine phosphatase (PTP) family. PTPs are known to be signaling molecules that regulate a variety of cellular processes including cell growth, differentiation, mitotic cycle, and oncogenic transformation. This PTP possesses an extracellular region, a single transmembrane region, and a single intracellular catalytic domain, and thus represents a receptor-type PTP. Silencing of this gene has been associated with colorectal cancer. Multiple transcript variants encoding different isoforms have been found for this gene. This gene shares a symbol (PTPRQ) with another gene, protein tyrosine phosphatase, receptor type, Q (GeneID 374462), which is also located on chromosome 12. [provided by RefSeq, May 2011]

Protein Families: Druggable Genome, Phosphatase, Transmembrane

Protein Pathways: MAPK signaling pathway

Product images:



Coomassie blue staining of purified PTPRR protein (Cat# [TP311122]). The protein was produced from HEK293T cells transfected with PTPRR cDNA clone (Cat# [RC211122]) using MegaTran 2.0 (Cat# [TT210002]).