

Product datasheet for PH311114

Apolipoprotein L 1 (APOL1) (NM_003661) Human Mass Spec Standard

Product data:

Product Type:	Mass Spec Standards
Description:	APOL1 MS Standard C13 and N15-labeled recombinant protein (NP_003652)
Species:	Human
Expression Host:	HEK293
Expression cDNA Clone or AA Sequence:	RC211114
Predicted MW:	43.97 kDa
Protein Sequence:	>RC211114 representing NM_003661 Red=Cloning site Green=Tags(s) MEGAALLRVSVLCIWMASLFLGVGVRAEEAGARVQQNVPSGTDGDPQSKPLGDWAAGTMDPESSIFIED AIKYFKEKVSTQNLLLLLTDNEAWNGFVAAAELPRNEADELRKALDNLARQMIMKDNWHDKGQQYRNWF LKEFPRLKSKLEDNIRRLRALADGVQKVHKGTTIANVVSGLSISGILTLVGMGLAPFTEGGSLVLLPEP GMELGITAALTGITSSTMDYGKKWWTQAQAHDLVIKSLDKLKEVREFLGENISNFLSLAGNTYQLTRGIG KDIRALRRARANLQSVPHASASRPRVTEPI SAESGEQVERVNEPSILEMSRGVKLTDVAPVSFFLVLDVV YL VYESKHLHEGAKSETAEELKKVAQELEEKLNILNNNYKILQADQEL TRTRPLEQKLI SEEDLAANDILDYKDDDDKV
Tag:	C-Myc/DDK
Purity:	> 80% as determined by SDS-PAGE and Coomassie blue staining
Concentration:	>0.05 µg/µL as determined by microplate BCA method
Labeling Method:	Labeled with [U- ¹³ C ₆ , ¹⁵ N ₄]-L-Arginine and [U- ¹³ C ₆ , ¹⁵ N ₂]-L-Lysine
Buffer:	25 mM Tris-HCl, 100 mM glycine, pH 7.3
Storage:	Store at -80°C. Avoid repeated freeze-thaw cycles.
Stability:	Stable for 3 months from receipt of products under proper storage and handling conditions.
RefSeq:	NP_003652
RefSeq Size:	2856
RefSeq ORF:	1194
Synonyms:	APO-L; APOL; APOL-I; FSGS4
Locus ID:	8542



[View online »](#)

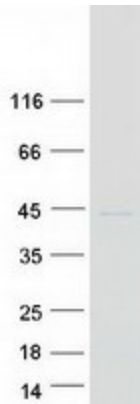
UniProt ID: [O14791](#), [Q2KHQ6](#)

Cytogenetics: 22q12.3

Summary: This gene encodes a secreted high density lipoprotein which binds to apolipoprotein A-I. Apolipoprotein A-I is a relatively abundant plasma protein and is the major apoprotein of HDL. It is involved in the formation of most cholesteryl esters in plasma and also promotes efflux of cholesterol from cells. This apolipoprotein L family member may play a role in lipid exchange and transport throughout the body, as well as in reverse cholesterol transport from peripheral cells to the liver. Several different transcript variants encoding different isoforms have been found for this gene. [provided by RefSeq, Nov 2008]

Protein Families: Secreted Protein, Transmembrane

Product images:



Coomassie blue staining of purified APOL1 protein (Cat# [TP311114]). The protein was produced from HEK293T cells transfected with APOL1 cDNA clone (Cat# [RC211114]) using MegaTran 2.0 (Cat# [TT210002]).