

Product datasheet for PH311109

GM CSF (CSF2) (NM_000758) Human Mass Spec Standard

Product data:

Product Type:	Mass Spec Standards
Description:	CSF2 MS Standard C13 and N15-labeled recombinant protein (NP_000749)
Species:	Human
Expression Host:	HEK293
Expression cDNA Clone or AA Sequence:	RC211109
Predicted MW:	16.3 kDa
Protein Sequence:	>RC211109 protein sequence Red=Cloning site Green=Tags(s) MWLQSLLLLGTVACCSISAPARSPSPSTQPWEHVNAIQEARRLLNLSRDTAAEMNETVEVISEMFDLQEP CLQTRLELYKQGLRGSLTKLKGPLTMMASHYKQHCPPTPETSCATQIITFESFKENLKDFLLVIPFDCWE PVQE TRTRPLEQKLI SEEDLAANDILDYKDDDDKV
Tag:	C-Myc/DDK
Purity:	> 80% as determined by SDS-PAGE and Coomassie blue staining
Concentration:	>0.05 µg/µL as determined by microplate BCA method
Labeling Method:	Labeled with [U- 13C6, 15N4]-L-Arginine and [U- 13C6, 15N2]-L-Lysine
Buffer:	25 mM Tris-HCl, 100 mM glycine, pH 7.3
Storage:	Store at -80°C. Avoid repeated freeze-thaw cycles.
Stability:	Stable for 3 months from receipt of products under proper storage and handling conditions.
RefSeq:	<u>NP_000749</u>
RefSeq Size:	800
RefSeq ORF:	432
Synonyms:	CSF; GMCSF
Locus ID:	1437
UniProt ID:	<u>P04141</u>



[View online »](#)

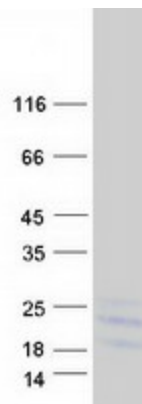
Cytogenetics: 5q31.1

Summary: The protein encoded by this gene is a cytokine that controls the production, differentiation, and function of granulocytes and macrophages. The active form of the protein is found extracellularly as a homodimer. This gene has been localized to a cluster of related genes at chromosome region 5q31, which is known to be associated with interstitial deletions in the 5q- syndrome and acute myelogenous leukemia. Other genes in the cluster include those encoding interleukins 4, 5, and 13. This gene plays a role in promoting tissue inflammation. Elevated levels of cytokines, including the one produced by this gene, have been detected in SARS-CoV-2 infected patients that develop acute respiratory distress syndrome. Mice deficient in this gene or its receptor develop pulmonary alveolar proteinosis. [provided by RefSeq, Aug 2020]

Protein Families: Druggable Genome, ES Cell Differentiation/IPS, Secreted Protein

Protein Pathways: Cytokine-cytokine receptor interaction, Fc epsilon RI signaling pathway, Hematopoietic cell lineage, Jak-STAT signaling pathway, Natural killer cell mediated cytotoxicity, T cell receptor signaling pathway

Product images:



Coomassie blue staining of purified CSF2 protein (Cat# [TP311109]). The protein was produced from HEK293T cells transfected with CSF2 cDNA clone (Cat# [RC211109]) using MegaTran 2.0 (Cat# [TT210002]).