

Product datasheet for PH311105

SULT1A1 (NM_177530) Human Mass Spec Standard

Product data:

Product Type:	Mass Spec Standards
Description:	SULT1A1 MS Standard C13 and N15-labeled recombinant protein (NP_803566)
Species:	Human
Expression Host:	HEK293
Expression cDNA Clone or AA Sequence:	RC211105
Predicted MW:	34.2 kDa
Protein Sequence:	>RC211105 protein sequence Red=Cloning site Green=Tags(s) MELIQDTSRPPLEYVKGVPLIKYFAEALGPLQSFQARPDDL ISTYPKSGTTWVSQILDMIYQGGDLEKC HRAPIFMRVPFLEFKAPGIPSGMETLKDTPAPRLLKTHLPLALLPQTLLDQKVKVYVARNAKDVAVSYY HFYHMAKVHPEPGTWDSFLEKFMVGEVSYGSWYQHVQEWELSRTHPVL YLFYEDMKENPKREIQILEF VGRSLPEETVDFMVQHTSFKEMKKNPMTNYTTPQEFMDHSISPFMRKGMAGDWKTTFTVAQNERFDADY AEKMAGCSLSFRSEL TRTRPLEQKLI SEEDLAANDILDYKDDDDKV
Tag:	C-Myc/DDK
Purity:	> 80% as determined by SDS-PAGE and Coomassie blue staining
Concentration:	>0.05 µg/µL as determined by microplate BCA method
Labeling Method:	Labeled with [U- ¹³ C ₆ , ¹⁵ N ₄]-L-Arginine and [U- ¹³ C ₆ , ¹⁵ N ₂]-L-Lysine
Buffer:	25 mM Tris-HCl, 100 mM glycine, pH 7.3
Storage:	Store at -80°C. Avoid repeated freeze-thaw cycles.
Stability:	Stable for 3 months from receipt of products under proper storage and handling conditions.
RefSeq:	NP_803566
RefSeq Size:	1410
RefSeq ORF:	885
Synonyms:	HAST1/HAST2; P-PST; P-PST 1; PST; ST1A1; ST1A3; STP; STP1; ts-PST; TSPST1
Locus ID:	6817



[View online »](#)

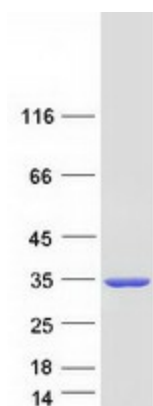
UniProt ID: [P50225](#)

Cytogenetics: 16p11.2

Summary: Sulfotransferase enzymes catalyze the sulfate conjugation of many hormones, neurotransmitters, drugs, and xenobiotic compounds. These cytosolic enzymes are different in their tissue distributions and substrate specificities. The gene structure (number and length of exons) is similar among family members. This gene encodes one of two phenol sulfotransferases with thermostable enzyme activity. Multiple alternatively spliced variants that encode two isoforms have been identified for this gene. [provided by RefSeq, Jul 2008]

Protein Pathways: Sulfur metabolism

Product images:



Coomassie blue staining of purified SULT1A1 protein (Cat# [TP311105]). The protein was produced from HEK293T cells transfected with SULT1A1 cDNA clone (Cat# [RC211105]) using MegaTran 2.0 (Cat# [TT210002]).