

## Product datasheet for PH311100

### NECAP1 (NM\_015509) Human Mass Spec Standard

#### Product data:

Product Type:	Mass Spec Standards
Description:	NECAP1 MS Standard C13 and N15-labeled recombinant protein (NP_056324)
Species:	Human
Expression Host:	HEK293
Expression cDNA Clone or AA Sequence:	RC211100
Predicted MW:	29.7 kDa
Protein Sequence:	>RC211100 protein sequence Red=Cloning site Green=Tags(s)  MATELEYESVLCVKPDVSVYRIPPRASNRGYRASDWKLDQPDWTGRLRITSKGKTAYIKLEDKVSSELFA QAPVEQYPGIAVETVTDSSRYFVIRIQDGTGRSAFIGIGFTDRGDAFDNFVSLQDHFKWKQESEISKES QEMDARPKLDLGFKEGQTIKLCIGNITNKKGGASKPRTARGGGLSLLPPPPGGKVTIPPPSSVAISNHV TPPPIPKSNHGGSDADILLDLDSPAPVTPAPTVPVSVSNDLWGDFSTASSVVPNQAPQPSNWWQF  TRTRPLEQKLI SEEDLAANDILDYKDDDDKV
Tag:	C-Myc/DDK
Purity:	> 80% as determined by SDS-PAGE and Coomassie blue staining
Concentration:	>0.05 µg/µL as determined by microplate BCA method
Labeling Method:	Labeled with [U- <sup>13</sup> C <sub>6</sub> , <sup>15</sup> N <sub>4</sub> ]-L-Arginine and [U- <sup>13</sup> C <sub>6</sub> , <sup>15</sup> N <sub>2</sub> ]-L-Lysine
Buffer:	25 mM Tris-HCl, 100 mM glycine, pH 7.3
Storage:	Store at -80°C. Avoid repeated freeze-thaw cycles.
Stability:	Stable for 3 months from receipt of products under proper storage and handling conditions.
RefSeq:	<a href="#">NP_056324</a>
RefSeq Size:	2600
RefSeq ORF:	825
Synonyms:	DEE21; EIEE21
Locus ID:	25977
UniProt ID:	<a href="#">Q8NC96</a>

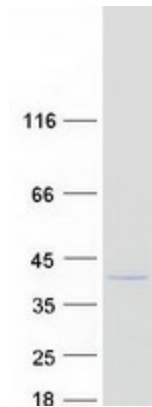


[View online »](#)

Cytogenetics: 12p13.31

**Summary:** This gene encodes a protein containing two characteristic WXXF motifs. The encoded protein localizes to clathrin-coated vesicles, where it binds components of the adapter protein complexes and aids in endocytosis. Loss of function of this gene results in early infantile epileptic encephalopathy-21. There is a pseudogene for this gene on chromosome 7. Alternative splicing results in multiple transcript variants. [provided by RefSeq, Jun 2014]

### Product images:



Coomassie blue staining of purified NECAP1 protein (Cat# [TP311100]). The protein was produced from HEK293T cells transfected with NECAP1 cDNA clone (Cat# [RC211100]) using MegaTran 2.0 (Cat# [TT210002]).