

Product datasheet for PH311051

C2orf68 (NM_001013649) Human Mass Spec Standard

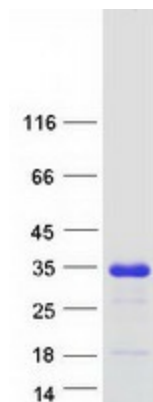
Product data:

Product Type:	Mass Spec Standards
Description:	C2orf68 MS Standard C13 and N15-labeled recombinant protein (NP_001013671)
Species:	Human
Expression Host:	HEK293
Expression cDNA Clone or AA Sequence:	RC211051
Predicted MW:	18.8 kDa
Protein Sequence:	<p>>RC211051 protein sequence</p> <p>Red=Cloning site Green=Tags(s)</p> <p>MEAGPHPRPGHCCKPGGRLDMNHGFVHHIRRNQIARDDYDKKVKQAAKEKVRRRHTPAPTRPRKPDQVY LPRHRDVSAPRNPDIYEESSGSSGGSELEPSGHQLFCLEYEADSGEVTSVIVYQGDDPGKVSEKVSAAH TPLDPPMREALKLRIQEEIAKRQSQH</p> <p>TRTRPLEQKLISEEDLAANDILDYKDDDDKV</p>
Tag:	C-Myc/DDK
Purity:	> 80% as determined by SDS-PAGE and Coomassie blue staining
Concentration:	>0.05 µg/µL as determined by microplate BCA method
Labeling Method:	Labeled with [U- ¹³ C ₆ , ¹⁵ N ₄]-L-Arginine and [U- ¹³ C ₆ , ¹⁵ N ₂]-L-Lysine
Buffer:	25 mM Tris-HCl, 100 mM glycine, pH 7.3
Storage:	Store at -80°C. Avoid repeated freeze-thaw cycles.
Stability:	Stable for 3 months from receipt of products under proper storage and handling conditions.
RefSeq:	<u>NP_001013671</u>
RefSeq Size:	4283
RefSeq ORF:	498
Synonyms:	HCRCN81
Locus ID:	388969
UniProt ID:	<u>Q2NKG9</u> , <u>L7T9J5</u>


[View online »](#)

Cytogenetics: 2p11.2

Product images:



Coomassie blue staining of purified C2orf68 protein (Cat# [TP311051]). The protein was produced from HEK293T cells transfected with C2orf68 cDNA clone (Cat# [RC211051]) using MegaTran 2.0 (Cat# [TT210002]).