

Product datasheet for PH311042

H2BC18 (NM_001024599) Human Mass Spec Standard

Product data:

Product Type:	Mass Spec Standards
Description:	HIST2H2BF MS Standard C13 and N15-labeled recombinant protein (NP_001019770)
Species:	Human
Expression Host:	HEK293
Expression cDNA Clone or AA Sequence:	RC211042
Predicted MW:	13.9 kDa
Protein Sequence:	>RC211042 protein sequence Red =Cloning site Green =Tags(s) MPDPAKSAPAPKKGSKKAVTKVQKKGKKRKRSRKESYSVYVYKVLKQVHPDTGISSKAMGIMNSFVNDI FERIAGEASRLAHYNKRSTITSREIQTAVRLLLLPGELAKHAVSEGTKAVTKYTSSK TR TRPLEQKLISEEDLAANDILDYKDDDDKV
Tag:	C-Myc/DDK
Purity:	> 80% as determined by SDS-PAGE and Coomassie blue staining
Concentration:	>0.05 µg/µL as determined by microplate BCA method
Labeling Method:	Labeled with [U- 13C6, 15N4]-L-Arginine and [U- 13C6, 15N2]-L-Lysine
Buffer:	25 mM Tris-HCl, 100 mM glycine, pH 7.3
Storage:	Store at -80°C. Avoid repeated freeze-thaw cycles.
Stability:	Stable for 3 months from receipt of products under proper storage and handling conditions.
RefSeq:	NP_001019770
RefSeq Size:	495
RefSeq ORF:	378
Synonyms:	HIST2H2BF
Locus ID:	440689
UniProt ID:	Q5QNW6
Cytogenetics:	1q21.2



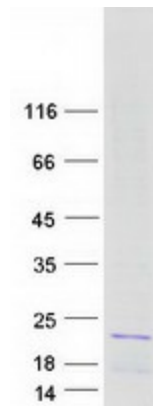
[View online »](#)

Summary:

Histones are basic nuclear proteins that are responsible for the nucleosome structure of the chromosomal fiber in eukaryotes. This structure consists of approximately 146 bp of DNA wrapped around a nucleosome, an octamer composed of pairs of each of the four core histones (H2A, H2B, H3, and H4). The chromatin fiber is further compacted through the interaction of a linker histone, H1, with the DNA between the nucleosomes to form higher order chromatin structures. This gene encodes a replication-dependent histone that is a member of the histone H2B family and is found in a histone cluster on chromosome 1. [provided by RefSeq, Aug 2015]

Protein Pathways:

Systemic lupus erythematosus

Product images:

Coomassie blue staining of purified HIST2H2BF protein (Cat# [TP311042]). The protein was produced from HEK293T cells transfected with HIST2H2BF cDNA clone (Cat# [RC211042]) using MegaTran 2.0 (Cat# [TT210002]).