

## Product datasheet for PH311040

### PGRPS (PGLYRP1) (NM\_005091) Human Mass Spec Standard

#### Product data:

Product Type:	Mass Spec Standards
Description:	PGLYRP1 MS Standard C13 and N15-labeled recombinant protein (NP_005082)
Species:	Human
Expression Host:	HEK293
Expression cDNA Clone or AA Sequence:	RC211040
Predicted MW:	21.7 kDa
Protein Sequence:	>RC211040 protein sequence <b>Red</b> =Cloning site <b>Green</b> =Tags(s)  MSRRSMLLAWALPSLLRLGAAQETEDPACCSPIVPRNEWKALASECAQHLPLRYVVVSHTAGSSCNTP ASCQQQARNVQHYHMKTLGWCDVGYNFLIGEDGLVYEGRWNFRTGAHSGHLWNPMSIGISFMGNMYMDRVP TPQAIRAAQGLLACGVAQGALRSNYVLKGHRDVQRTLSPGNQLYHLIQNWPHYRSP  <b>TRTRPLEQKLI SEEDLAANDILDYKDDDDKV</b>
Tag:	C-Myc/DDK
Purity:	> 80% as determined by SDS-PAGE and Coomassie blue staining
Concentration:	>0.05 µg/µL as determined by microplate BCA method
Labeling Method:	Labeled with [U- <sup>13</sup> C <sub>6</sub> , <sup>15</sup> N <sub>4</sub> ]-L-Arginine and [U- <sup>13</sup> C <sub>6</sub> , <sup>15</sup> N <sub>2</sub> ]-L-Lysine
Buffer:	25 mM Tris-HCl, 100 mM glycine, pH 7.3
Storage:	Store at -80°C. Avoid repeated freeze-thaw cycles.
Stability:	Stable for 3 months from receipt of products under proper storage and handling conditions.
RefSeq:	<a href="#">NP_005082</a>
RefSeq Size:	972
RefSeq ORF:	588
Synonyms:	PGLYRP; PGRP; PGRP-S; PGRPS; TAG7; TNFSF3L
Locus ID:	8993
UniProt ID:	<a href="#">O75594</a>



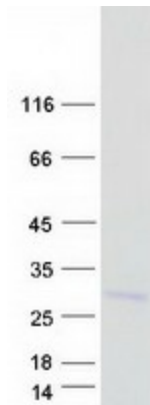
[View online »](#)

Cytogenetics: 19q13.32

**Summary:** Pattern receptor that binds to murein peptidoglycans (PGN) of Gram-positive bacteria. Has bactericidal activity towards Gram-positive bacteria. May kill Gram-positive bacteria by interfering with peptidoglycan biosynthesis. Binds also to Gram-negative bacteria, and has bacteriostatic activity towards Gram-negative bacteria. Plays a role in innate immunity. [UniProtKB/Swiss-Prot Function]

**Protein Families:** Druggable Genome, Secreted Protein

### Product images:



Coomassie blue staining of purified PGLYRP1 protein (Cat# [TP311040]). The protein was produced from HEK293T cells transfected with PGLYRP1 cDNA clone (Cat# [RC211040]) using MegaTran 2.0 (Cat# [TT210002]).