

## Product datasheet for PH311039

### IL17C (NM\_013278) Human Mass Spec Standard

#### Product data:

Product Type:	Mass Spec Standards
Description:	IL17C MS Standard C13 and N15-labeled recombinant protein (NP_037410)
Species:	Human
Expression Host:	HEK293
Expression cDNA Clone or AA Sequence:	RC211039
Predicted MW:	21.8 kDa
Protein Sequence:	>RC211039 protein sequence Red=Cloning site Green=Tags(s)  MTLLPGLLFLTWLHTCLAHHDPSLRGHPHSHGTPHCYSAEELPLGQAPPHLLARGAKWGQALPVALVSSL EAASHRGRHERPSATTQCPVLRPEEVLEADTHQRSISPWRYRVDTEDEYRYPQKLAFAECLCRGCIDARTG RETAALNSVRLLQSLLVLRRRPCSRDGSGLPTPGAFHFTEFIHVPVGCTCVLPRSV  TRTRPLEQKLISEEDLAANDILDYKDDDDKV
Tag:	C-Myc/DDK
Purity:	> 80% as determined by SDS-PAGE and Coomassie blue staining
Concentration:	>0.05 µg/µL as determined by microplate BCA method
Labeling Method:	Labeled with [U- <sup>13</sup> C <sub>6</sub> , <sup>15</sup> N <sub>4</sub> ]-L-Arginine and [U- <sup>13</sup> C <sub>6</sub> , <sup>15</sup> N <sub>2</sub> ]-L-Lysine
Buffer:	25 mM Tris-HCl, 100 mM glycine, pH 7.3
Storage:	Store at -80°C. Avoid repeated freeze-thaw cycles.
Stability:	Stable for 3 months from receipt of products under proper storage and handling conditions.
RefSeq:	<a href="#">NP_037410</a>
RefSeq Size:	1048
RefSeq ORF:	591
Synonyms:	CX2; IL-17C
Locus ID:	27189
UniProt ID:	<a href="#">Q9P0M4</a>



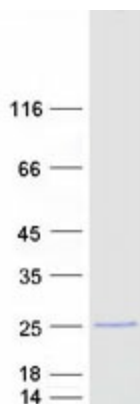
[View online »](#)

**Cytogenetics:** 16q24.2

**Summary:** The protein encoded by this gene is a T cell-derived cytokine that shares the sequence similarity with IL17. This cytokine was reported to stimulate the release of tumor necrosis factor alpha and interleukin 1 beta from a monocytic cell line. The expression of this cytokine was found to be restricted to activated T cells. [provided by RefSeq, Jul 2008]

**Protein Families:** Druggable Genome, Secreted Protein

**Product images:**



Coomassie blue staining of purified IL17C protein (Cat# [TP311039]). The protein was produced from HEK293T cells transfected with IL17C cDNA clone (Cat# [RC211039]) using MegaTran 2.0 (Cat# [TT210002]).