

Product datasheet for PH311037

IL36 beta (IL36B) (NM_173178) Human Mass Spec Standard

Product data:

| | |
|---------------------------------------|--|
| Product Type: | Mass Spec Standards |
| Description: | IL1F8 MS Standard C13 and N15-labeled recombinant protein (NP_775270) |
| Species: | Human |
| Expression Host: | HEK293 |
| Expression cDNA Clone or AA Sequence: | RC211037 |
| Predicted MW: | 17.7 kDa |
| Protein Sequence: | >RC211037 protein sequence Red=Cloning site Green=Tags(s) MNPQREAAPKSYAIRDSRQMVVWVLSGNSLIAAPLSRSIKPVTLHLIACRDTEFSDKEKGNMYYLGIKGD LCLFCAEIQQKPTLQLKEKNIMDLVVEKKAQKPFLLFFHNKEGSTSVFQSVSPGWF IATSTTSGQPIFLT KERGITNNTNFYLDSE TRTRPLEQKLISEEDLAANDILDYKDDDDKV |
| Tag: | C-Myc/DDK |
| Purity: | > 80% as determined by SDS-PAGE and Coomassie blue staining |
| Concentration: | >0.05 µg/µL as determined by microplate BCA method |
| Labeling Method: | Labeled with [U- 13C6, 15N4]-L-Arginine and [U- 13C6, 15N2]-L-Lysine |
| Buffer: | 25 mM Tris-HCl, 100 mM glycine, pH 7.3 |
| Storage: | Store at -80°C. Avoid repeated freeze-thaw cycles. |
| Stability: | Stable for 3 months from receipt of products under proper storage and handling conditions. |
| RefSeq: | NP_775270 |
| RefSeq Size: | 1068 |
| RefSeq ORF: | 471 |
| Synonyms: | FIL1; FIL1-(ETA); FIL1H; FIL1-(ETA); IL-1F8; IL-1H2; IL1-ETA; IL1F8; IL1H2 |
| Locus ID: | 27177 |
| UniProt ID: | Q9NZH7 |



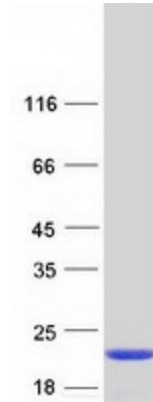
[View online »](#)

Cytogenetics: 2q14.1

Summary: The protein encoded by this gene is a member of the interleukin 1 cytokine family. Protein structure modeling indicated that this cytokine may contain a 12-stranded beta-trefoil structure that is conserved between IL1A (IL-A alpha) and IL1B (IL-1 beta). This gene and eight other interleukin 1 family genes form a cytokine gene cluster on chromosome 2. Two alternatively spliced transcript variants encoding distinct isoforms have been reported. [provided by RefSeq, Jul 2008]

Protein Families: Druggable Genome, Secreted Protein

Product images:



Coomassie blue staining of purified IL36B protein (Cat# [TP311037]). The protein was produced from HEK293T cells transfected with IL36B cDNA clone (Cat# [RC211037]) using MegaTran 2.0 (Cat# [TT210002]).