

## Product datasheet for PH311032

### SERPINB13 (NM\_012397) Human Mass Spec Standard

#### Product data:

Product Type:	Mass Spec Standards
Description:	SERPINB13 MS Standard C13 and N15-labeled recombinant protein (NP_036529)
Species:	Human
Expression Host:	HEK293
Expression cDNA Clone or AA Sequence:	RC211032
Predicted MW:	44.3 kDa
Protein Sequence:	>RC211032 protein sequence Red=Cloning site Green=Tags(s)

MDSLGAVSTRLLGFDLFKELKKTNDGNIFFSPVGILTAIGMVLGTRGATASQLEEVFHSEKETKSSRIKA  
EEKEVIENTEAVHQFQKFLTEISKLTNDYELNITNRLFGEKTYLFLQKYL DYVEKYYHASLEPVDVNA  
ADESRKKINSWESKTNEKIKDLFPDGSISSSTKLVLVNMVYFKGQWDREFKENTKEEFWMNKSTSKS  
VQMMTQSHSFSFTFLEDLQAKILGIPYKNNDLSMFVLLPNDIDGLEKIIDKISPEKLVEWTSFGHMEERK  
VNLHLPRFEVEDGYDLEAVLAAMGMGDAFSEHKADYSGMSSGSLYAQKFLHSSFVAVTEEGTEAAAATG  
IGFTVTSAPGHENVHCNHPFLFFIRHNESNSILFFGRFSSP

TRTRPLEQKLI SEEDLAANDILDYKDDDDKV

Tag:	C-Myc/DDK
Purity:	> 80% as determined by SDS-PAGE and Coomassie blue staining
Concentration:	>0.05 µg/µL as determined by microplate BCA method
Labeling Method:	Labeled with [U- <sup>13</sup> C <sub>6</sub> , <sup>15</sup> N <sub>4</sub> ]-L-Arginine and [U- <sup>13</sup> C <sub>6</sub> , <sup>15</sup> N <sub>2</sub> ]-L-Lysine
Buffer:	25 mM Tris-HCl, 100 mM glycine, pH 7.3
Storage:	Store at -80°C. Avoid repeated freeze-thaw cycles.
Stability:	Stable for 3 months from receipt of products under proper storage and handling conditions.
RefSeq:	<u><a href="#">NP_036529</a></u>
RefSeq Size:	3197
RefSeq ORF:	1173
Synonyms:	headpin; HSHUR7SEQ; HUR7; PI13
Locus ID:	5275



[View online »](#)

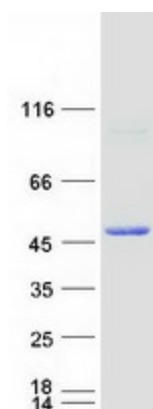
UniProt ID: [Q9UIV8](#)

Cytogenetics: 18q21.33

Summary: The protein encoded by this gene is a member of the serpin family of serine protease inhibitors. The encoded protein inhibits the activity of cathepsin K and is itself transcriptionally repressed by RUNX1. This gene is downregulated in many types of cancer. [provided by RefSeq, Jan 2017]

Protein Families: Druggable Genome, Transmembrane

### Product images:



Coomassie blue staining of purified SERPINB13 protein (Cat# [TP311032]). The protein was produced from HEK293T cells transfected with SERPINB13 cDNA clone (Cat# [RC211032]) using MegaTran 2.0 (Cat# [TT210002]).