

Product datasheet for PH311030

PTGIS (NM_000961) Human Mass Spec Standard

Product data:

Product Type:	Mass Spec Standards
Description:	PTGIS MS Standard C13 and N15-labeled recombinant protein (NP_000952)
Species:	Human
Expression Host:	HEK293
Expression cDNA Clone or AA Sequence:	RC211030
Predicted MW:	57.1 kDa
Protein Sequence:	>RC211030 protein sequence Red=Cloning site Green=Tags(s)

MAWAALLGLLAALLLLLLLRRRTRRPGEPLDLGSIPWLGALDFGKDAASFLTRMKEKHGDIFTILVG
GRYVTVLLDPHSYDAVVWEPRTRLDHFHAYAIFLMERIFDVQLPHYSPSDEKARMKLTLLHRELQALTEAM
YTNLHAVLLGDATEAGSGWHEMGLLDFSYSFLLRAGYLTLYGIEALPRTHESQAQDRVHSADVFTFRQL
DRLLPKLARGSLSVGDKDHMCVKSRLLKLLSPARLARRAHRKWLSEYLLHLEEMGVSEEMQARALVLQ
LWATQGNMGPAAFWLLFLLKNPEALAAVRGELESILWQAEQPVSQTTTLPQKVLDPVLDVSLVSESLR
LTAAPFITREVVVDLAMPADGREFNLRGDRLLLFPFLSPQRDPFIYTDPEVFKYNRFLNPDGSEKKDF
YKDGKRLKNYNMPWGAGHNHCLGRSYAVNSIKQFVFLVLVHLDLELINADVEIPEFDLSRYGFGLMQPEH
DVPVRYRIRP

TRTRPLEQKLISEEDLAANDILDYKDDDDKV

Tag:	C-Myc/DDK
Purity:	> 80% as determined by SDS-PAGE and Coomassie blue staining
Concentration:	>0.05 µg/µL as determined by microplate BCA method
Labeling Method:	Labeled with [U- ¹³ C ₆ , ¹⁵ N ₄]-L-Arginine and [U- ¹³ C ₆ , ¹⁵ N ₂]-L-Lysine
Buffer:	25 mM Tris-HCl, 100 mM glycine, pH 7.3
Storage:	Store at -80°C. Avoid repeated freeze-thaw cycles.
Stability:	Stable for 3 months from receipt of products under proper storage and handling conditions.
RefSeq:	<u>NP_000952</u>
RefSeq Size:	5603
RefSeq ORF:	1500



[View online »](#)

Synonyms: CYP8; CYP8A1; PGIS; PTGI

Locus ID: 5740

UniProt ID: [Q16647](#)

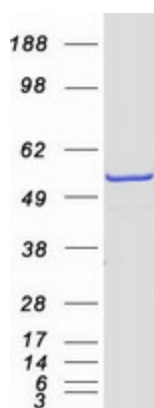
Cytogenetics: 20q13.13

Summary: This gene encodes a member of the cytochrome P450 superfamily of enzymes. The cytochrome P450 proteins are monooxygenases which catalyze many reactions involved in drug metabolism and synthesis of cholesterol, steroids and other lipids. However, this protein is considered a member of the cytochrome P450 superfamily on the basis of sequence similarity rather than functional similarity. This endoplasmic reticulum membrane protein catalyzes the conversion of prostglandin H2 to prostacyclin (prostaglandin I2), a potent vasodilator and inhibitor of platelet aggregation. An imbalance of prostacyclin and its physiological antagonist thromboxane A2 contribute to the development of myocardial infarction, stroke, and atherosclerosis. [provided by RefSeq, Jul 2008]

Protein Families: Druggable Genome, P450, Transmembrane

Protein Pathways: Arachidonic acid metabolism, Metabolic pathways

Product images:



Coomassie blue staining of purified PTGIS protein (Cat# [TP311030]). The protein was produced from HEK293T cells transfected with PTGIS cDNA clone (Cat# [RC211030]) using MegaTran 2.0 (Cat# [TT210002]).