

## Product datasheet for PH311025

### KIRREL 3 (KIRREL3) (NM\_032531) Human Mass Spec Standard

#### Product data:

Product Type:	Mass Spec Standards
Description:	KIRREL3 MS Standard C13 and N15-labeled recombinant protein (NP_115920)
Species:	Human
Expression Host:	HEK293
Expression cDNA Clone or AA Sequence:	RC211025
Predicted MW:	85.3 kDa
Protein Sequence:	>RC211025 protein sequence Red=Cloning site Green=Tags(s)

MKPFQLDLLFVCFLLFSQELGLQKRGCCCLVLYGMAKDKFRRMNEGQVYSFSQQPQDQVSVSGQPVTLLCA  
IPEYDGFVLWIKDGLALGVGRDLSSYPQYLVVG NHLSGEHLKILRAELQDDAVYECQAIQAAIRSRPAR  
LTVLVPPDDPVILGGPVISLRAGDPLNLTCHADNAKPAASIIWLRKGEVINGATYSKTLRLDGKRESIVS  
TLFISPGDVENGQSIVCRATNKAIPGGKETSVTIDIQHPLVNLVSEPPQVLEDNVVTFHCSAKANPAVT  
QYRWAKRGQIIKEASGEVYRTTVDYTYFSEPVSCVETNALGSTNLSRTVDVYFGPRMTEPQSLLVDLGS  
DAIFSCAWTGNPSLTIVWMKRGSGVLSNEKTLTKSVRQEDAGKYVCRAVVPVGVGAGEREVTLVNGPP  
IISSTQTQHALHGEKGQIKCFIRSTPPDRIAWSKENVLESSTSGRYTVETISTEEGVISTLTISNIVR  
ADFQTIYNCTAWNSFGSDTEIIRLKEQGSEMKSAGLEAESVPMAVIIGVAVGAGVAFLVLMATIVAFCC  
ARSQRNLKGVVSAKNDIRVEIVHKEPASGREGEHSTIKQLMMDRGEFQQDSVLKQLEVLKEEKEFQNL  
KDPTNGYYSVNTFKEHSTPTISLSSCQPDLRPAGKQRVPTGMSFTNIYSTLSGQGRLYDYGQRFVLGMG  
SSSIELCEREFQRGSLDSSSFLDTQCDSSVSSSGKQDGYVQFDKASKASASSSHHSQSSSQNSDPSRPL  
QRRMQTHV

TRTRPLEQKLISEEDLAANDILDYKDDDDKV

Tag:	C-Myc/DDK
Purity:	> 80% as determined by SDS-PAGE and Coomassie blue staining
Concentration:	>0.05 µg/µL as determined by microplate BCA method
Labeling Method:	Labeled with [U- <sup>13</sup> C <sub>6</sub> , <sup>15</sup> N <sub>4</sub> ]-L-Arginine and [U- <sup>13</sup> C <sub>6</sub> , <sup>15</sup> N <sub>2</sub> ]-L-Lysine
Buffer:	25 mM Tris-HCl, 100 mM glycine, pH 7.3
Storage:	Store at -80°C. Avoid repeated freeze-thaw cycles.
Stability:	Stable for 3 months from receipt of products under proper storage and handling conditions.
RefSeq:	<a href="#">NP_115920</a>



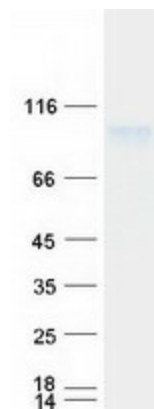
[View online >](#)

RefSeq Size:	3794
RefSeq ORF:	2334
Synonyms:	KIRRE; MRD4; NEPH2; PRO4502
Locus ID:	84623
UniProt ID:	<a href="#">Q8IZU9</a>
Cytogenetics:	11q24.2

**Summary:** The protein encoded by this gene is a member of the nephrin-like protein family. These proteins are expressed in fetal and adult brain, and also in podocytes of kidney glomeruli. The cytoplasmic domains of these proteins interact with the C-terminus of podocin, also expressed in the podocytes, cells involved in ensuring size- and charge-selective ultrafiltration. The protein encoded by this gene is a synaptic cell adhesion molecule with multiple extracellular immunoglobulin-like domains and a cytoplasmic PDZ domain-binding motif. Mutations in this gene are associated with several neurological and cognitive disorders. Alternatively spliced transcript variants encoding different isoforms have been found for this gene. [provided by RefSeq, Jul 2017]

**Protein Families:** Transmembrane

### Product images:



Coomassie blue staining of purified KIRREL3 protein (Cat# [TP311025]). The protein was produced from HEK293T cells transfected with KIRREL3 cDNA clone (Cat# [RC211025]) using MegaTran 2.0 (Cat# [TT210002]).