

Product datasheet for PH311021

LCE3D (NM_032563) Human Mass Spec Standard

Product data:

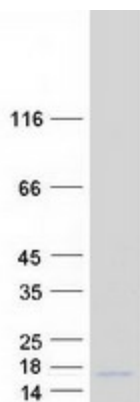
Product Type:	Mass Spec Standards
Description:	LCE3D MS Standard C13 and N15-labeled recombinant protein (NP_115952)
Species:	Human
Expression Host:	HEK293
Expression cDNA Clone or AA Sequence:	RC211021
Predicted MW:	9.5 kDa
Protein Sequence:	>RC211021 protein sequence Red=Cloning site Green=Tags(s) MSCQQNQQCQPPPKCPSPKCPPKSPVQCLPPASSGCAPSSGVCGPSSEGGCFLNHHRHRCRRQRPNS CDRGSQQGGGSGCGHSGGCC TRTRPLEQKLISEEDLAANDILDYKDDDDKV
Tag:	C-Myc/DDK
Purity:	> 80% as determined by SDS-PAGE and Coomassie blue staining
Concentration:	>0.05 µg/µL as determined by microplate BCA method
Labeling Method:	Labeled with [U- 13C6, 15N4]-L-Arginine and [U- 13C6, 15N2]-L-Lysine
Buffer:	25 mM Tris-HCl, 100 mM glycine, pH 7.3
Storage:	Store at -80°C. Avoid repeated freeze-thaw cycles.
Stability:	Stable for 3 months from receipt of products under proper storage and handling conditions.
RefSeq:	NP_115952
RefSeq Size:	617
RefSeq ORF:	276
Synonyms:	LEP16; SPRL6A; SPRL6B
Locus ID:	84648
UniProt ID:	Q9BYE3
Cytogenetics:	1q21.3



[View online »](#)

Summary: Precursors of the cornified envelope of the stratum corneum.[UniProtKB/Swiss-Prot Function]

Product images:



Coomassie blue staining of purified LCE3D protein (Cat# [TP311021]). The protein was produced from HEK293T cells transfected with LCE3D cDNA clone (Cat# [RC211021]) using MegaTran 2.0 (Cat# [TT210002]).