

Product datasheet for PH310968

INSL5 (NM_005478) Human Mass Spec Standard

Product data:

| | |
|---------------------------------------|--|
| Product Type: | Mass Spec Standards |
| Description: | INSL5 MS Standard C13 and N15-labeled recombinant protein (NP_005469) |
| Species: | Human |
| Expression Host: | HEK293 |
| Expression cDNA Clone or AA Sequence: | RC210968 |
| Predicted MW: | 15.3 kDa |
| Protein Sequence: | >RC210968 protein sequence Red=Cloning site Green=Tags(s) MKGSIFTLFLFSVLFAISEVRSKESVRLCGLEYIRTVIYICASSRWRHLEGIPQAQQAETGNSFQLPHK REFSEENPAQNLPKVDASGEDRLWGGQMPTEELWKSCKHVSMSRQDLQTLCTDGCSTDLALC TRTRPLEQKLISEEDLAANDILDYKDDDDKV |
| Tag: | C-Myc/DDK |
| Purity: | > 80% as determined by SDS-PAGE and Coomassie blue staining |
| Concentration: | >0.05 µg/µL as determined by microplate BCA method |
| Labeling Method: | Labeled with [U- 13C6, 15N4]-L-Arginine and [U- 13C6, 15N2]-L-Lysine |
| Buffer: | 25 mM Tris-HCl, 100 mM glycine, pH 7.3 |
| Storage: | Store at -80°C. Avoid repeated freeze-thaw cycles. |
| Stability: | Stable for 3 months from receipt of products under proper storage and handling conditions. |
| RefSeq: | NP_005469 |
| RefSeq Size: | 718 |
| RefSeq ORF: | 405 |
| Synonyms: | PRO182; UNQ156 |
| Locus ID: | 10022 |
| UniProt ID: | Q9Y5Q6 |
| Cytogenetics: | 1p31.3 |

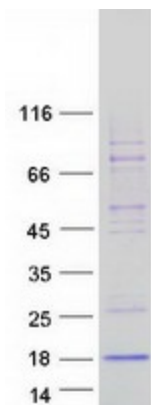


[View online »](#)

Summary: The protein encoded by this gene contains a classical signature of the insulin superfamily and is highly similar to relaxin 3 (RLN3/INSL7). [provided by RefSeq, Jul 2008]

Protein Families: Secreted Protein

Product images:



Coomassie blue staining of purified INSL5 protein (Cat# [TP310968]). The protein was produced from HEK293T cells transfected with INSL5 cDNA clone (Cat# [RC210968]) using MegaTran 2.0 (Cat# [TT210002]).