

## Product datasheet for PH310965

### ERAS (NM\_181532) Human Mass Spec Standard

#### Product data:

Product Type:	Mass Spec Standards
Description:	ERAS MS Standard C13 and N15-labeled recombinant protein (NP_853510)
Species:	Human
Expression Host:	HEK293
Expression cDNA Clone or AA Sequence:	RC210965
Predicted MW:	25.3 kDa
Protein Sequence:	>RC210965 protein sequence Red=Cloning site Green=Tags(s)  MELPTKPGTFDLGLATWSPSFQGETHRAQARRRDVGRQLPEYKAVVVGASGVGKSALTIQLNHQCFVEDH DPTIQDSYWKELTLDGDCILNVLDTAGQAIHRALRDQCLAVCDGVLGVFALDDPSSLIQLQQIWATWGP HPAQPLVLVGNKCDLVTTAGDAHAAAAALAHSWGAFVETSAKTRQGVVEEAFSLLVHEIQRVQEAMAKEP MARSCREKTRHQKATCHCGCSVA  TRTRPLEQKLISEEDLAANDILDYKDDDDKV
Tag:	C-Myc/DDK
Purity:	> 80% as determined by SDS-PAGE and Coomassie blue staining
Concentration:	>0.05 µg/µL as determined by microplate BCA method
Labeling Method:	Labeled with [U- <sup>13</sup> C <sub>6</sub> , <sup>15</sup> N <sub>4</sub> ]-L-Arginine and [U- <sup>13</sup> C <sub>6</sub> , <sup>15</sup> N <sub>2</sub> ]-L-Lysine
Buffer:	25 mM Tris-HCl, 100 mM glycine, pH 7.3
Storage:	Store at -80°C. Avoid repeated freeze-thaw cycles.
Stability:	Stable for 3 months from receipt of products under proper storage and handling conditions.
RefSeq:	<a href="#">NP_853510</a>
RefSeq Size:	826
RefSeq ORF:	699
Synonyms:	HRAS2; HRASP
Locus ID:	3266
UniProt ID:	<a href="#">Q7Z444</a>



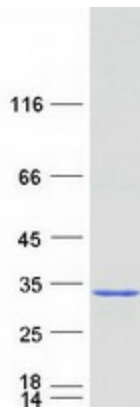
[View online »](#)

**Cytogenetics:** Xp11.23

**Summary:** This gene encodes a constitutively active member of the small GTPase Ras protein family. The encoded protein activates the phosphatidylinositol 3-kinase signal transduction pathway in undifferentiated stem cells, but is not expressed in differentiated cells. This gene may be involved in cancer and chemotherapy resistance. [provided by RefSeq, Dec 2012]

**Protein Families:** Druggable Genome

**Product images:**



Coomassie blue staining of purified ERAS protein (Cat# [TP310965]). The protein was produced from HEK293T cells transfected with ERAS cDNA clone (Cat# [RC210965]) using MegaTran 2.0 (Cat# [TT210002]).