

Product datasheet for PH310949

KLHDC1 (NM_172193) Human Mass Spec Standard

Product data:

Product Type:	Mass Spec Standards
Description:	KLHDC1 MS Standard C13 and N15-labeled recombinant protein (NP_751943)
Species:	Human
Expression Host:	HEK293
Expression cDNA Clone or AA Sequence:	RC210949
Predicted MW:	46.7 kDa
Protein Sequence:	>RC210949 protein sequence Red=Cloning site Green=Tags(s)

MADSQLFCVAEERSGHCAVVDGNFLYVWGGYVSIEDNEVYLPNDEIWTYDIDSGLWRMHLMGELPASMS
GSCGACINGKLYIFGGYDDKGYSNRLYFVNLRTREDETYIWEKITDFEGQPPTPRDKLSCWVYKDRLIYFG
GYGRRHSELQDCFDVHDASWEEQIFWGWHDVHIFDTKTQTFQPEIKGGVPPQPRAAHTCAVLGNKGY
IFGGRVLQTRMNDLHYLNLDWTWSGRITINGESPKHRSWHTLTPAADKFLFCGGLSADNIPLSDGWIH
NVTTCWKQLTHLPKTRPRLWHTACLGKENEIMVFGGSKDALLALDTGHCNDLLIFQTQPYSLLRSLDC
IGKNSIMLESQISLLPPKLLQQVLKKITFWAAANHREEQRVQKEETENKYQWISSN

TRTRPLEQKLISEEDLAANDILDYKDDDDKV

Tag:	C-Myc/DDK
Purity:	> 80% as determined by SDS-PAGE and Coomassie blue staining
Concentration:	>0.05 µg/µL as determined by microplate BCA method
Labeling Method:	Labeled with [U- ¹³ C ₆ , ¹⁵ N ₄]-L-Arginine and [U- ¹³ C ₆ , ¹⁵ N ₂]-L-Lysine
Buffer:	25 mM Tris-HCl, 100 mM glycine, pH 7.3
Storage:	Store at -80°C. Avoid repeated freeze-thaw cycles.
Stability:	Stable for 3 months from receipt of products under proper storage and handling conditions.
RefSeq:	<u>NP_751943</u>
RefSeq Size:	2702
RefSeq ORF:	1218
Synonyms:	MST025
Locus ID:	122773

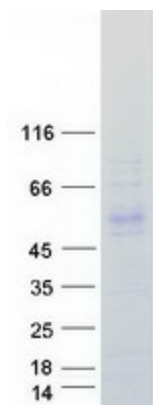


[View online »](#)

UniProt ID: [Q8N7A1](#)

Cytogenetics: 14q21.3

Product images:



Coomassie blue staining of purified KLHDC1 protein (Cat# [TP310949]). The protein was produced from HEK293T cells transfected with KLHDC1 cDNA clone (Cat# [RC210949]) using MegaTran 2.0 (Cat# [TT210002]).