

Product datasheet for PH310942

Resistin (RETN) (NM_020415) Human Mass Spec Standard

Product data:

Product Type:	Mass Spec Standards
Description:	RETN MS Standard C13 and N15-labeled recombinant protein (NP_065148)
Species:	Human
Expression Host:	HEK293
Expression cDNA Clone or AA Sequence:	RC210942
Predicted MW:	11.4 kDa
Protein Sequence:	>RC210942 protein sequence Red =Cloning site Green =Tags(s) MKALCLLLLPLVLLVSSKTLCSMEEAINERIQEVAGSLIFRAISSIGLECQSVTSRGLATCPRGFAVT GCTCGSACGSWDVRAETTCHCQCAGMDWTGARCCRVQP TR TRPLEQKLISEEDLAANDILDYKDDDDKV
Tag:	C-Myc/DDK
Purity:	> 80% as determined by SDS-PAGE and Coomassie blue staining
Concentration:	>0.05 µg/µL as determined by microplate BCA method
Labeling Method:	Labeled with [U- 13C6, 15N4]-L-Arginine and [U- 13C6, 15N2]-L-Lysine
Buffer:	25 mM Tris-HCl, 100 mM glycine, pH 7.3
Storage:	Store at -80°C. Avoid repeated freeze-thaw cycles.
Stability:	Stable for 3 months from receipt of products under proper storage and handling conditions.
RefSeq:	NP_065148
RefSeq Size:	478
RefSeq ORF:	324
Synonyms:	ADSF; FIZZ3; RETN1; RSTN; XCP1
Locus ID:	56729
UniProt ID:	Q9HD89
Cytogenetics:	19p13.2



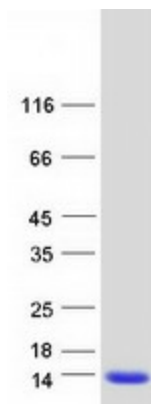
[View online »](#)

Summary:

This gene belongs to the family defined by the mouse resistin-like genes. The characteristic feature of this family is the C-terminal stretch of 10 cys residues with identical spacing. The mouse homolog of this protein is secreted by adipocytes, and may be the hormone potentially linking obesity to type II diabetes. The encoded protein also has an antimicrobial role in skin, displaying antibacterial activity against both Gram positive and Gram negative bacteria. Alternatively spliced transcript variants encoding the same protein have been found for this gene. [provided by RefSeq, Jul 2020]

Protein Families:

Druggable Genome, Secreted Protein

Product images:

Coomassie blue staining of purified RETN protein (Cat# [TP310942]). The protein was produced from HEK293T cells transfected with RETN cDNA clone (Cat# [RC210942]) using MegaTran 2.0 (Cat# [TT210002]).