

Product datasheet for PH310932

EP4 (PTGER4) (NM_000958) Human Mass Spec Standard

Product data:

Product Type:	Mass Spec Standards
Description:	PTGER4 MS Standard C13 and N15-labeled recombinant protein (NP_000949)
Species:	Human
Expression Host:	HEK293
Expression cDNA Clone or AA Sequence:	RC210932
Predicted MW:	53.1 kDa
Protein Sequence:	>RC210932 protein sequence Red=Cloning site Green=Tags(s)

MSTPGVNSSASLSPDRLNSPVTIPAVMFI FG VVGNLVAIVVLCKSRKEQKETTFFYTLVCGLA VTDLLGTL
LVSPVTIATYMKGQWP GGQPLCEYSTFILLFFSL SGLSIICAMSVERYLAINHAYFYSHYVDKRLAGLTL
FAVYASNVLFCALPNMGLGSSRLQYPDTWCFIDWTTNVTAAHAASYMYAGFSSFLILATVLCNVLVCGAL
LRMHRQFMRRTSLGTEQHHAAAAASVASRGHPAASPALPRLSDFRRRRSFRIAGAEIQMVILLIATSLV
VLICSIPLVVRVFNQLYQPSLEREVSKNPDQAIRIASVNPILDPIWIYILLRKT VLSKAIEKIKCLFCR
IGGSRRRSGQHCSDSQRTSSAMSGHSRSFISRELKEISSTSQTLLPDL SLPDLSENGLGGRNLLPGVPG
MGLAQEDTTLRLRISETSDSSQGQDSESVLLVDEAGGSGRAGPAPKGS SLQVTFPSETLNLSEKCI

TRTRPLEQKLI SEEDLAANDILDYKDDDDKV

Tag:	C-Myc/DDK
Purity:	> 80% as determined by SDS-PAGE and Coomassie blue staining
Concentration:	>0.05 µg/µL as determined by microplate BCA method
Labeling Method:	Labeled with [U- ¹³ C ₆ , ¹⁵ N ₄]-L-Arginine and [U- ¹³ C ₆ , ¹⁵ N ₂]-L-Lysine
Buffer:	25 mM Tris-HCl, 100 mM glycine, pH 7.3
Storage:	Store at -80°C. Avoid repeated freeze-thaw cycles.
Stability:	Stable for 3 months from receipt of products under proper storage and handling conditions.
RefSeq:	<u>NP_000949</u>
RefSeq Size:	3432
RefSeq ORF:	1464
Synonyms:	EP4; EP4R



[View online »](#)

Locus ID: 5734

UniProt ID: [P35408](#), [A0PJF5](#)

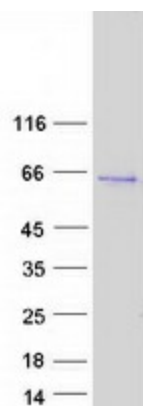
Cytogenetics: 5p13.1

Summary: The protein encoded by this gene is a member of the G-protein coupled receptor family. This protein is one of four receptors identified for prostaglandin E2 (PGE2). This receptor can activate T-cell factor signaling. It has been shown to mediate PGE2 induced expression of early growth response 1 (EGR1), regulate the level and stability of cyclooxygenase-2 mRNA, and lead to the phosphorylation of glycogen synthase kinase-3. Knockout studies in mice suggest that this receptor may be involved in the neonatal adaptation of circulatory system, osteoporosis, as well as initiation of skin immune responses. [provided by RefSeq, Jul 2008]

Protein Families: Druggable Genome, GPCR, Transmembrane

Protein Pathways: Neuroactive ligand-receptor interaction

Product images:



Coomassie blue staining of purified PTGER4 protein (Cat# [TP310932]). The protein was produced from HEK293T cells transfected with PTGER4 cDNA clone (Cat# [RC210932]) using MegaTran 2.0 (Cat# [TT210002]).