

## Product datasheet for PH310930

### TOR1AIP2 (NM\_145034) Human Mass Spec Standard

#### Product data:

Product Type:	Mass Spec Standards
Description:	TOR1AIP2 MS Standard C13 and N15-labeled recombinant protein (NP_659471)
Species:	Human
Expression Host:	HEK293
Expression cDNA Clone or AA Sequence:	RC210930
Predicted MW:	51.3 kDa
Protein Sequence:	>RC210930 protein sequence Red=Cloning site Green=Tags(s)

MADSGLEPQEDSQKDLNDPSVNSQAQETTIIASNAEEAEILHSACGLSKDHQEVETEGPESADTGDKS  
ESPDEANVGKHPKDKTEENKQSFLDGGKGHLPSENLGKEPLDPDPSPDKVGRADAHLGSSSVLALP  
KEASDGTGASQEPPTTDSQEAQSPGHSSAGQEGEDTLRRRLLAPEAGSHPQQTQKLEEIKENAQDTMRQI  
NKKGFWSYGPVILVVLVAVVASSVNSYSSPAQQVPKNPALEAFLAQFSQLEDKFPQGSSFLWQRGRKF  
LQKHLNASNPTEPATIIFTAAREGRETLLKCLSHHVADAYTSSQKVSPIQIDGAGRTWQSDTVKLLVDLE  
LSYGFENGQKAAVVHHFESFPAGSTLIFYKYCDHENAFAKDVALLVTLLEEETLEASVGPTEEEKVRD  
LLWAKFTNSDTPTSFNHMDSKLSGLWSRISHLVLPVQPVSIEEQCLF

TRTRPLEQKLISEEDLAANDILDYKDDDDKV

Tag:	C-Myc/DDK
Purity:	> 80% as determined by SDS-PAGE and Coomassie blue staining
Concentration:	>0.05 µg/µL as determined by microplate BCA method
Labeling Method:	Labeled with [U- 13C6, 15N4]-L-Arginine and [U- 13C6, 15N2]-L-Lysine
Buffer:	25 mM Tris-HCl, 100 mM glycine, pH 7.3
Storage:	Store at -80°C. Avoid repeated freeze-thaw cycles.
Stability:	Stable for 3 months from receipt of products under proper storage and handling conditions.
RefSeq:	<u><a href="#">NP_659471</a></u>
RefSeq Size:	7912
RefSeq ORF:	1410
Synonyms:	IFRG15; LULL1; NET9



[View online »](#)

Locus ID: 163590

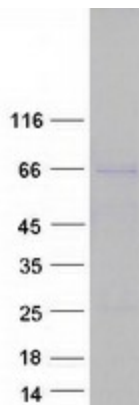
UniProt ID: [Q8NFO8](#)

Cytogenetics: 1q25.2

**Summary:** One of the two protein isoforms encoded by this gene is a type II integral membrane protein found in the endoplasmic reticulum (ER). The encoded protein is a cofactor for the ATPase TorsinA, regulating the amount of TorsinA present in the ER compared to that found in the nuclear envelope. Defects in this protein are a cause of early onset primary dystonia, a neuromuscular disease. The other isoform encoded by this gene is an interferon alpha responsive protein whose cellular role has yet to be determined. [provided by RefSeq, Mar 2017]

**Protein Families:** Transmembrane

### Product images:



Coomassie blue staining of purified TOR1AIP2 protein (Cat# [TP310930]). The protein was produced from HEK293T cells transfected with TOR1AIP2 cDNA clone (Cat# [RC210930]) using MegaTran 2.0 (Cat# [TT210002]).