

Product datasheet for PH310926

TSGA2 (RSPH1) (NM_080860) Human Mass Spec Standard

Product data:

Product Type:	Mass Spec Standards
Description:	RSPH1 MS Standard C13 and N15-labeled recombinant protein (NP_543136)
Species:	Human
Expression Host:	HEK293
Expression cDNA Clone or AA Sequence:	RC210926
Predicted MW:	35.1 kDa
Protein Sequence:	>RC210926 protein sequence Red =Cloning site Green =Tags(s)

MSDLGSEEELEEGENDIGEYEGGRNEAGERHGRGRARLPNGDTYEGSYEFGKRHGQGIYKFKNGARYIGE
YVRNKKHGQGTFIYPDGSRYEGEWANDLRHGHGVYYYINNDTYTGEWFAHQRHGQGTYL YAETGSKYVGT
WVNGQQEGTAELIHLNHRYPQKFLNKNPVGPGKYVFDVGCEQHGEYRLTDMERGESEEEEEELVTVPKWK
ATQITELALWPTLPKKPTSTDGPGQDAPGAESAGEPGEAAQALLEGFEGEMDMRPGDEDADVLREESRE
YDQEEFRYDMDEGNINSEEEETRQSDLQD

TRTRPLEQKLI SEEDLAANDILDYKDDDDKV

Tag:	C-Myc/DDK
Purity:	> 80% as determined by SDS-PAGE and Coomassie blue staining
Concentration:	>0.05 µg/µL as determined by microplate BCA method
Labeling Method:	Labeled with [U- ¹³ C ₆ , ¹⁵ N ₄]-L-Arginine and [U- ¹³ C ₆ , ¹⁵ N ₂]-L-Lysine
Buffer:	25 mM Tris-HCl, 100 mM glycine, pH 7.3
Storage:	Store at -80°C. Avoid repeated freeze-thaw cycles.
Stability:	Stable for 3 months from receipt of products under proper storage and handling conditions.
RefSeq:	NP_543136
RefSeq Size:	1445
RefSeq ORF:	927
Synonyms:	CT79; RSP44; RSPH10A; TSA2; TSGA2
Locus ID:	89765



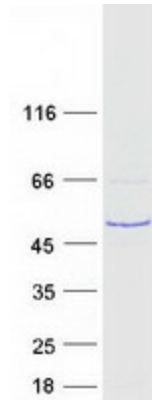
[View online »](#)

UniProt ID: [Q8WYR4](#)

Cytogenetics: 21q22.3

Summary: This gene encodes a male meiotic metaphase chromosome-associated acidic protein. This gene is expressed in tissues with motile cilia or flagella, including the trachea, lungs, airway brushings, and testes. Mutations in this gene result in primary ciliary dyskinesia-24. Alternatively spliced transcript variants encoding different isoforms have been found for this gene. [provided by RefSeq, Sep 2014]

Product images:



Coomassie blue staining of purified RSPH1 protein (Cat# [TP310926]). The protein was produced from HEK293T cells transfected with RSPH1 cDNA clone (Cat# [RC210926]) using MegaTran 2.0 (Cat# [TT210002]).