

Product datasheet for PH310918

ERP29 (NM_006817) Human Mass Spec Standard

Product data:

Product Type:	Mass Spec Standards
Description:	ERP29 MS Standard C13 and N15-labeled recombinant protein (NP_006808)
Species:	Human
Expression Host:	HEK293
Expression cDNA Clone or AA Sequence:	RC210918
Predicted MW:	29 kDa
Protein Sequence:	>RC210918 protein sequence Red =Cloning site Green =Tags(s) MAAAVPRAAFLSPLLPLLLGFLLLSAPHGGSLHTKGALPLDTVTFYKVIPKSKFVLVKFDTQYPYGEKQ DEFKRLAENSASSDDLVAEVGISDYGDKLNMELSEKYKLDKESYPVFYLFRDGDFENPVPYTGAVKVGA IQRWLKGGVYLGMPGCLPVYDALAGEFIRASGVEARQALLKQGQDNLSSVKETQKKWAEQYLKIMGKIL DQGEDFPASEMTRIARLIEKNKMSDGKKEELQKSLNILTAFQKKGAEKEEL TRTRPLEQKLISEEDLAANDILDYKDDDDKV
Tag:	C-Myc/DDK
Purity:	> 80% as determined by SDS-PAGE and Coomassie blue staining
Concentration:	>0.05 µg/µL as determined by microplate BCA method
Labeling Method:	Labeled with [U- ¹³ C ₆ , ¹⁵ N ₄]-L-Arginine and [U- ¹³ C ₆ , ¹⁵ N ₂]-L-Lysine
Buffer:	25 mM Tris-HCl, 100 mM glycine, pH 7.3
Storage:	Store at -80°C. Avoid repeated freeze-thaw cycles.
Stability:	Stable for 3 months from receipt of products under proper storage and handling conditions.
RefSeq:	NP_006808
RefSeq Size:	1472
RefSeq ORF:	783
Synonyms:	C12orf8; ERp28; ERp31; HEL-S-107; PDI-DB; PDIA9
Locus ID:	10961
UniProt ID:	P30040 , V9HW71



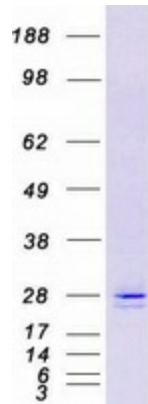
[View online »](#)

Cytogenetics: 12q24.13

Summary: This gene encodes a protein which localizes to the lumen of the endoplasmic reticulum (ER). It is a member of the protein disulfide isomerase (PDI) protein family but lacks an active thioredoxin motif, suggesting that this protein does not function as a disulfide isomerase. The canonical protein dimerizes and is thought to play a role in the processing of secretory proteins within the ER. Alternative splicing results in multiple transcript variants encoding different isoforms. [provided by RefSeq, Dec 2016]

Protein Families: Transmembrane

Product images:



Coomassie blue staining of purified ERP29 protein (Cat# [TP310918]). The protein was produced from HEK293T cells transfected with ERP29 cDNA clone (Cat# [RC210918]) using MegaTran 2.0 (Cat# [TT210002]).