

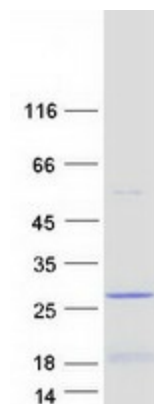
Product datasheet for PH310909

LIN52 (NM_001024674) Human Mass Spec Standard

Product data:

Product Type:	Mass Spec Standards
Description:	LIN52 MS Standard C13 and N15-labeled recombinant protein (NP_001019845)
Species:	Human
Expression Host:	HEK293
Expression cDNA Clone or AA Sequence:	RC210909
Predicted MW:	13 kDa
Protein Sequence:	<p>>RC210909 protein sequence</p> <p>Red=Cloning site Green=Tags(s)</p> <p>MGWKMASPTDGTDLASLLSFEKLDRA SPDLWPEQLPGVAEFAASF KSPITSSPPKWM AEIERDDIDMLK ELGSLTTANLMEKVRGLQNLAYQLGLDESREMTRGKFLNILEKPKK</p> <p>TRTRPLEQKLISEEDLAANDILDYKDDDDKV</p>
Tag:	C-Myc/DDK
Purity:	> 80% as determined by SDS-PAGE and Coomassie blue staining
Concentration:	>0.05 µg/µL as determined by microplate BCA method
Labeling Method:	Labeled with [U- 13C6, 15N4]-L-Arginine and [U- 13C6, 15N2]-L-Lysine
Buffer:	25 mM Tris-HCl, 100 mM glycine, pH 7.3
Storage:	Store at -80°C. Avoid repeated freeze-thaw cycles.
Stability:	Stable for 3 months from receipt of products under proper storage and handling conditions.
RefSeq:	NP_001019845
RefSeq Size:	1798
RefSeq ORF:	348
Synonyms:	C14orf46; c14_5549
Locus ID:	91750
UniProt ID:	Q52LA3 , B3KN83
Cytogenetics:	14q24.3


[View online »](#)

Product images:


Coomassie blue staining of purified LIN52 protein (Cat# [TP310909]). The protein was produced from HEK293T cells transfected with LIN52 cDNA clone (Cat# [RC210909]) using MegaTran 2.0 (Cat# [TT210002]).