

Product datasheet for PH310906

Tuberoinfundibular peptide (PTH2) (NM_178449) Human Mass Spec Standard

Product data:

Product Type:	Mass Spec Standards
Description:	PTH2 MS Standard C13 and N15-labeled recombinant protein (NP_848544)
Species:	Human
Expression Host:	HEK293
Expression cDNA Clone or AA Sequence:	RC210906
Predicted MW:	11.2 kDa
Protein Sequence:	>RC210906 protein sequence Red =Cloning site Green =Tags(s) METRQVSRSPRVRLLLLLLLLLLVVPWGVRTASGVALPPVGVLSLRPPGRAWADPATPRRSLALADDAA FRERARLLAALERRHWLNSYMHKLLVLDAP TR TRPLEQKLISEEDLAANDILDYKDDDDKV
Tag:	C-Myc/DDK
Purity:	> 80% as determined by SDS-PAGE and Coomassie blue staining
Concentration:	>0.05 µg/µL as determined by microplate BCA method
Labeling Method:	Labeled with [U- 13C6, 15N4]-L-Arginine and [U- 13C6, 15N2]-L-Lysine
Buffer:	25 mM Tris-HCl, 100 mM glycine, pH 7.3
Storage:	Store at -80°C. Avoid repeated freeze-thaw cycles.
Stability:	Stable for 3 months from receipt of products under proper storage and handling conditions.
RefSeq:	NP_848544
RefSeq Size:	459
RefSeq ORF:	300
Synonyms:	TIP39
Locus ID:	113091
UniProt ID:	Q96A98
Cytogenetics:	19q13.33



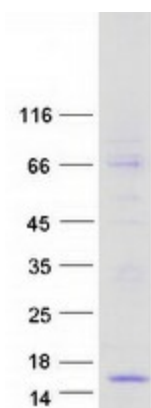
[View online »](#)

Summary:

This gene encodes the precursor of a peptide hormone that shares sequence similarity with the parathyroid hormone. This gene is expressed in various regions of the brain where it plays a role in the release of pituitary hormones, anxiety and nociception. The encoded precursor protein is proteolytically processed to generate the biologically active neuropeptide. [provided by RefSeq, Jul 2015]

Protein Families:

Secreted Protein, Transmembrane

Product images:

Coomassie blue staining of purified PTH2 protein (Cat# [TP310906]). The protein was produced from HEK293T cells transfected with PTH2 cDNA clone (Cat# [RC210906]) using MegaTran 2.0 (Cat# [TT210002]).