

Product datasheet for PH310897

Macrophage Inflammatory Protein 3 (CCL23) (NM_145898) Human Mass Spec Standard

Product data:

Product Type:	Mass Spec Standards
Description:	CCL23 MS Standard C13 and N15-labeled recombinant protein (NP_665905)
Species:	Human
Expression Host:	HEK293
Expression cDNA Clone or AA Sequence:	RC210897
Predicted MW:	13.4 kDa
Protein Sequence:	>RC210897 protein sequence Red=Cloning site Green=Tags(s) MKVSVAAALSCLMLVTALGSQARVTKDAETEFMMSKLPLENPVLLDRFHATSADCCISYTPRSIPCSLLES YFETNSECSKPGVIFLTKKGRRFCANPSDKQVQVCMRMLKLDTRIKTRKN TRTRPLEQKLISEEDLAANDILDYKDDDDKV
Tag:	C-Myc/DDK
Purity:	> 80% as determined by SDS-PAGE and Coomassie blue staining
Concentration:	>0.05 µg/µL as determined by microplate BCA method
Labeling Method:	Labeled with [U- 13C6, 15N4]-L-Arginine and [U- 13C6, 15N2]-L-Lysine
Buffer:	25 mM Tris-HCl, 100 mM glycine, pH 7.3
Storage:	Store at -80°C. Avoid repeated freeze-thaw cycles.
Stability:	Stable for 3 months from receipt of products under proper storage and handling conditions.
RefSeq:	NP_665905
RefSeq Size:	604
RefSeq ORF:	360
Synonyms:	CK-BETA-8; Ckb-8; Ckb-8-1; CKb8; hmpr-2a; MIP-3; MIP3; MPIF-1; SCYA23
Locus ID:	6368
UniProt ID:	P55773
Cytogenetics:	17q12



[View online »](#)

Summary:

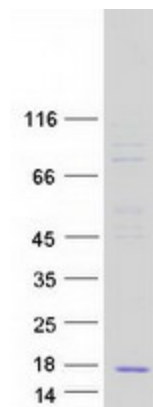
This gene is one of several chemokine genes clustered on the q-arm of chromosome 17. Chemokines form a superfamily of secreted proteins involved in immunoregulatory and inflammatory processes. The superfamily is divided into four subfamilies based on the arrangement of the N-terminal cysteine residues of the mature peptide. This chemokine, a member of the CC subfamily, displays chemotactic activity on resting T lymphocytes and monocytes, lower activity on neutrophils and no activity on activated T lymphocytes. The protein is also a strong suppressor of colony formation by a multipotential hematopoietic progenitor cell line. In addition, the product of this gene is a potent agonist of the chemokine (C-C motif) receptor 1. Alternative splicing results in multiple transcript variants that encode different isoforms. [provided by RefSeq, Jul 2013]

Protein Families:

Druggable Genome, Secreted Protein

Protein Pathways:

Chemokine signaling pathway, Cytokine-cytokine receptor interaction

Product images:

Coomassie blue staining of purified CCL23 protein (Cat# [TP310897]). The protein was produced from HEK293T cells transfected with CCL23 cDNA clone (Cat# [RC210897]) using MegaTran 2.0 (Cat# [TT210002]).