

## Product datasheet for PH310893

### GPHA2 (NM\_130769) Human Mass Spec Standard

#### Product data:

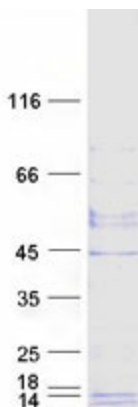
Product Type:	Mass Spec Standards
Description:	GPHA2 MS Standard C13 and N15-labeled recombinant protein (NP_570125)
Species:	Human
Expression Host:	HEK293
Expression cDNA Clone or AA Sequence:	RC210893
Predicted MW:	14.2 kDa
Protein Sequence:	<p>&gt;RC210893 protein sequence</p> <p>Red=Cloning site Green=Tags(s)</p> <p>MPMASPQTLVLVLLVLAVTEAWGQEAVIPGCHLHPFNVTVRSDRQGTCCQGSVAQACVGHCESSAFPSRY            SVLVASGYRHNITSVSQCCTISGLKKVKVQLQCVGSRREELEIFTARACQCDMCRLSRY</p> <p>TRTRPLEQKLISEEDLAANDILDYKDDDDKV</p>
Tag:	C-Myc/DDK
Purity:	> 80% as determined by SDS-PAGE and Coomassie blue staining
Concentration:	>0.05 µg/µL as determined by microplate BCA method
Labeling Method:	Labeled with [U- 13C6, 15N4]-L-Arginine and [U- 13C6, 15N2]-L-Lysine
Buffer:	25 mM Tris-HCl, 100 mM glycine, pH 7.3
Storage:	Store at -80°C. Avoid repeated freeze-thaw cycles.
Stability:	Stable for 3 months from receipt of products under proper storage and handling conditions.
RefSeq:	<a href="#">NP_570125</a>
RefSeq Size:	774
RefSeq ORF:	387
Synonyms:	A2; GPA2; ZSIG51
Locus ID:	170589
UniProt ID:	<a href="#">Q96T91</a> , <a href="#">A0A024R579</a>
Cytogenetics:	11q13.1


[View online »](#)

**Summary:** GPHA2 is a cystine knot-forming polypeptide and a subunit of the dimeric glycoprotein hormone family (Hsu et al., 2002 [PubMed 12089349]).[supplied by OMIM, Mar 2008]

**Protein Families:** Secreted Protein

**Product images:**



Coomassie blue staining of purified GPHA2 protein (Cat# [TP310893]). The protein was produced from HEK293T cells transfected with GPHA2 cDNA clone (Cat# [RC210893]) using MegaTran 2.0 (Cat# [TT210002]).