

## Product datasheet for PH310892

### PPPDE2 (DESI1) (NM\_015704) Human Mass Spec Standard

#### Product data:

Product Type:	Mass Spec Standards
Description:	PPPDE2 MS Standard C13 and N15-labeled recombinant protein (NP_056519)
Species:	Human
Expression Host:	HEK293
Expression cDNA Clone or AA Sequence:	RC210892
Predicted MW:	18.3 kDa
Protein Sequence:	>RC210892 protein sequence Red=Cloning site Green=Tags(s)  MEPPNLYPVKLYVYDLSKGLARRLSPIMLGKQLEGIWHTSIVVHKDEFFFGSGGISCCPPGGTLLGPPDS VVDVGSTEVTEEIFLEYLSSLGESLFRGEAYNLFHNCNTFSNEVAQFLTGRKIPSYITDLPSEVLSTPF GQALRPLLDSIQIQPPGGSSVGRPNGQS  TRTRPLEQKLISEEDLAANDILDYKDDDDKV
Tag:	C-Myc/DDK
Purity:	> 80% as determined by SDS-PAGE and Coomassie blue staining
Concentration:	>0.05 µg/µL as determined by microplate BCA method
Labeling Method:	Labeled with [U- 13C6, 15N4]-L-Arginine and [U- 13C6, 15N2]-L-Lysine
Buffer:	25 mM Tris-HCl, 100 mM glycine, pH 7.3
Storage:	Store at -80°C. Avoid repeated freeze-thaw cycles.
Stability:	Stable for 3 months from receipt of products under proper storage and handling conditions.
RefSeq:	<a href="#">NP_056519</a>
RefSeq Size:	3804
RefSeq ORF:	504
Synonyms:	D15Wsu75e; DeSI-1; DESI2; DJ347H13.4; FAM152B; POST; PPPDE2
Locus ID:	27351
UniProt ID:	<a href="#">Q6ICB0</a>

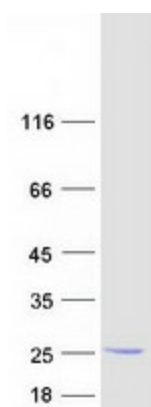


[View online »](#)

Cytogenetics: 22q13.2

**Summary:** Protease which deconjugates SUMO1, SUMO2 and SUMO3 from some substrate proteins. Has isopeptidase but not SUMO-processing activity (By similarity). Desumoylates ZBTB46 (By similarity). Collaborates with UBQLN4 in the export of ubiquitinated proteins from the nucleus to the cytoplasm (PubMed:29666234).[UniProtKB/Swiss-Prot Function]

### Product images:



Coomassie blue staining of purified DESI1 protein (Cat# [TP310892]). The protein was produced from HEK293T cells transfected with DESI1 cDNA clone (Cat# [RC210892]) using MegaTran 2.0 (Cat# [TT210002]).