

Product datasheet for PH310891

S100A5 (NM_002962) Human Mass Spec Standard

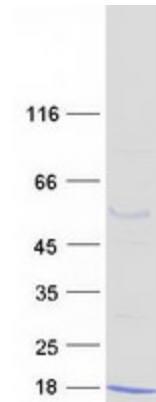
Product data:

Product Type:	Mass Spec Standards
Description:	S100A5 MS Standard C13 and N15-labeled recombinant protein (NP_002953)
Species:	Human
Expression Host:	HEK293
Expression cDNA Clone or AA Sequence:	RC210891
Predicted MW:	12.8 kDa
Protein Sequence:	<p>>RC210891 protein sequence</p> <p>Red=Cloning site Green=Tags(s)</p> <p>MPAAWILWAHSHSELHTVMETPLEKALTTMTTFHKYSGREGSKLTLSRKELKELIKKELCLGEMKESSI DDLMKSLDKNSDQEIDFKEYSVFLTMLCMAYNDFFLDNK</p> <p>TRTRPLEQKLISEEDLAANDILDYKDDDDKV</p>
Tag:	C-Myc/DDK
Purity:	> 80% as determined by SDS-PAGE and Coomassie blue staining
Concentration:	>0.05 µg/µL as determined by microplate BCA method
Labeling Method:	Labeled with [U- ¹³ C ₆ , ¹⁵ N ₄]-L-Arginine and [U- ¹³ C ₆ , ¹⁵ N ₂]-L-Lysine
Buffer:	25 mM Tris-HCl, 100 mM glycine, pH 7.3
Storage:	Store at -80°C. Avoid repeated freeze-thaw cycles.
Stability:	Stable for 3 months from receipt of products under proper storage and handling conditions.
RefSeq:	NP_002953
RefSeq Size:	710
RefSeq ORF:	333
Synonyms:	S100D
Locus ID:	6276
UniProt ID:	P33763
Cytogenetics:	1q21.3


[View online »](#)

Summary:

The protein encoded by this gene is a member of the S100 family of proteins containing 2 EF-hand calcium-binding motifs. S100 proteins are localized in the cytoplasm and/or nucleus of a wide range of cells, and involved in the regulation of a number of cellular processes such as cell cycle progression and differentiation. S100 genes include at least 13 members which are located as a cluster on chromosome 1q21. This protein has a Ca^{2+} affinity 20- to 100-fold higher than the other S100 proteins studied under identical conditions. This protein also binds Zn^{2+} and Cu^{2+} , and Cu^{2+} strongly which impairs the binding of Ca^{2+} . This protein is expressed in very restricted regions of the adult brain. [provided by RefSeq, Jul 2008]

Product images:


Coomassie blue staining of purified S100A5 protein (Cat# [TP310891]). The protein was produced from HEK293T cells transfected with S100A5 cDNA clone (Cat# [RC210891]) using MegaTran 2.0 (Cat# [TT210002]).