

Product datasheet for PH310880

PMS2 (NM_000535) Human Mass Spec Standard

Product data:

Product Type:	Mass Spec Standards
Description:	PMS2 MS Standard C13 and N15-labeled recombinant protein (NP_000526)
Species:	Human
Expression Host:	HEK293
Expression cDNA Clone or AA Sequence:	RC210880
Predicted MW:	95.8 kDa
Protein Sequence:	>RC210880 protein sequence Red=Cloning site Green=Tags(s)

MERAESSSTEPAKAIKPIDRKSVMHICSGQVVLSTAVKELVENS LDAGATNIDLKLDYGVDLIEVSD
 NGCGVEEENFEGLTLKHHTSKIQEFADLTQVETFGFRGEALSSLCALSDVTISTCHASAKVGTRLMFDHN
 GKIIQKTPYPRRGTTVSQQLFSTLPVRHKEFQRNIKKEYAKMVQVLHAYCIIISAGIRV SCTNQLGQGK
 RQPVVCTGGSPSIKENIGSVFGQQLQSLIPFVQLPPSDSVCEEYGLSCSDALHNLFYISGFISQCTHGV
 GRSSTRQFFFINRRPCDPAKVCRLVNEVYHMYNRHQYPFVVLNISVDSECV DINVTPDKRQILLQEEKL
 LLAVLKTSLIGMFDSDVNKLNVSQQPLLDVEGNLIKMHAADEKPMVEKQDQSPSLRTGEEKKDVSISRL
 REAFSLRHHTTENKPHSPKTPEPRRSPLGQKRGMLSSSTSGAISDKGVL RPQKEAVSSSHGPSDPTDRAEV
 EKDSGHGSTSVDSEGF SIPDTGSHCSSEYAASSPGDRGSEQEHVDSQEKAPETDDSFSDVDCHSNQEDTGC
 KFRVLPQPTNLATPNTKRFKKEEILSSSDICQKLVNTQDMSASQVDVAVKINKKVPLDFSISSLAKRIK
 QLHHEAQQSEGEQNYRKFRAKICPGENQA AEDEL RKEISKTMFAEME IIGQFNLF IITKLNEDIFIVDQ
 HATDEKYNFEMLQQHTVLQGQRLIAPQTLNLTAVNEAVLIENLEIFRKNGFDFVIDENAPYTERAKLISL
 PTSKNWTFGPQDVDELIFMLSDSPGVMCRPSRVKQMFASRACRKSVMIGTALNTSEMKKLITHMGEMDHP
 WNCPHGRPTMRHIANLGVISQN

TRTRPLEQKLI SEEDLAANDILDYKDDDDKV

Tag:	C-Myc/DDK
Purity:	> 80% as determined by SDS-PAGE and Coomassie blue staining
Concentration:	>0.05 µg/µL as determined by microplate BCA method
Labeling Method:	Labeled with [U- ¹³ C ₆ , ¹⁵ N ₄]-L-Arginine and [U- ¹³ C ₆ , ¹⁵ N ₂]-L-Lysine
Buffer:	25 mM Tris-HCl, 100 mM glycine, pH 7.3
Storage:	Store at -80°C. Avoid repeated freeze-thaw cycles.
Stability:	Stable for 3 months from receipt of products under proper storage and handling conditions.



[View online »](#)

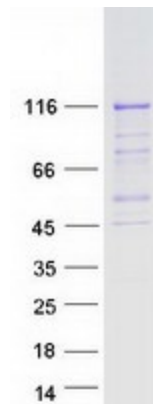
RefSeq:	NP_000526
RefSeq Size:	2851
RefSeq ORF:	2586
Synonyms:	HNPCC4; MLH4; MMRC54; PMS2CL; PMSL2
Locus ID:	5395
UniProt ID:	P54278 , B4DGM0 , Q7Z3Q2
Cytogenetics:	7p22.1

Summary: The protein encoded by this gene is a key component of the mismatch repair system that functions to correct DNA mismatches and small insertions and deletions that can occur during DNA replication and homologous recombination. This protein forms heterodimers with the gene product of the mutL homolog 1 (MLH1) gene to form the MutL-alpha heterodimer. The MutL-alpha heterodimer possesses an endonucleolytic activity that is activated following recognition of mismatches and insertion/deletion loops by the MutS-alpha and MutS-beta heterodimers, and is necessary for removal of the mismatched DNA. There is a DQHA(X)2E(X)4E motif found at the C-terminus of the protein encoded by this gene that forms part of the active site of the nuclease. Mutations in this gene have been associated with hereditary nonpolyposis colorectal cancer (HNPCC; also known as Lynch syndrome) and Turcot syndrome. [provided by RefSeq, Apr 2016]

Protein Families: Druggable Genome

Protein Pathways: Mismatch repair

Product images:



Coomassie blue staining of purified PMS2 protein (Cat# [TP310880]). The protein was produced from HEK293T cells transfected with PMS2 cDNA clone (Cat# [RC210880]) using MegaTran 2.0 (Cat# [TT210002]).