

Product datasheet for PH310873

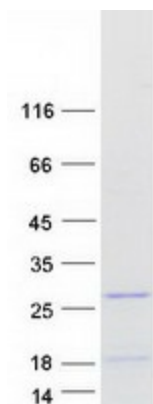
TRHDE-AS1 (NM_001025457) Human Mass Spec Standard

Product data:

Product Type:	Mass Spec Standards
Description:	LOC283392 MS Standard C13 and N15-labeled recombinant protein (NP_001020628)
Species:	Human
Expression Host:	HEK293
Expression cDNA Clone or AA Sequence:	RC210873
Predicted MW:	11.8 kDa
Protein Sequence:	>RC210873 representing NM_001025457 Red=Cloning site Green=Tags(s) MLPPPLRACGSRLSLPCAALSPRFPREPSNRFSAREKDGSGGKSEGVEREVRAFSPHSSGGVRRSSGWN VLAAAVTAATAAREAPEPYTLQLERKGWRWERLE TRTRPLEQKLISEEDLAANDILDYKDDDDKV
Tag:	C-Myc/DDK
Purity:	> 80% as determined by SDS-PAGE and Coomassie blue staining
Concentration:	>0.05 µg/µL as determined by microplate BCA method
Labeling Method:	Labeled with [U- 13C6, 15N4]-L-Arginine and [U- 13C6, 15N2]-L-Lysine
Buffer:	25 mM Tris-HCl, 100 mM glycine, pH 7.3
Storage:	Store at -80°C. Avoid repeated freeze-thaw cycles.
Stability:	Stable for 3 months from receipt of products under proper storage and handling conditions.
RefSeq:	NP_001020628
RefSeq Size:	430
RefSeq ORF:	312
Locus ID:	283392
Cytogenetics:	12q21.1



[View online »](#)

Product images:

Coomassie blue staining of purified LOC283392 protein (Cat# [TP310873]). The protein was produced from HEK293T cells transfected with LOC283392 cDNA clone (Cat# [RC210873]) using MegaTran 2.0 (Cat# [TT210002]).