

Product datasheet for PH310871

LCN15 (NM_203347) Human Mass Spec Standard

Product data:

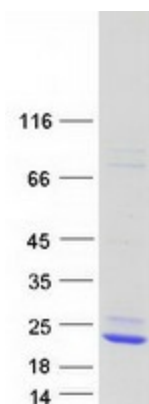
Product Type:	Mass Spec Standards
Description:	LCN15 MS Standard C13 and N15-labeled recombinant protein (NP_976222)
Species:	Human
Expression Host:	HEK293
Expression cDNA Clone or AA Sequence:	RC210871
Predicted MW:	20.5 kDa
Protein Sequence:	>RC210871 protein sequence Red=Cloning site Green=Tags(s) MMSFLLGAILTLLWAPTAQAEVLLQPDFNAEKFSGLWYVSMASDCRVFLGKKDHLMSSTRAIRPTEEGG LHVHMEFPGADGCNQVDAEYLKVGSEGHFRVPALGYLDVRIVDTDYSSFVLYIYKELEGALSTMVQLYS RTQDVSPQALKSFQDFYPTLGLPKDMMVMLPQSDACNPESKEAP TRTRPLEQKLI SEEDLAANDILDYKDDDDKV
Tag:	C-Myc/DDK
Purity:	> 80% as determined by SDS-PAGE and Coomassie blue staining
Concentration:	>0.05 µg/µL as determined by microplate BCA method
Labeling Method:	Labeled with [U- 13C6, 15N4]-L-Arginine and [U- 13C6, 15N2]-L-Lysine
Buffer:	25 mM Tris-HCl, 100 mM glycine, pH 7.3
Storage:	Store at -80°C. Avoid repeated freeze-thaw cycles.
Stability:	Stable for 3 months from receipt of products under proper storage and handling conditions.
RefSeq:	NP_976222
RefSeq Size:	762
RefSeq ORF:	552
Synonyms:	PRO6093; UNQ2541
Locus ID:	389812
UniProt ID:	Q6UWW0



[View online »](#)

Cytogenetics: 9q34.3

Product images:



Coomassie blue staining of purified LCN15 protein (Cat# [TP310871]). The protein was produced from HEK293T cells transfected with LCN15 cDNA clone (Cat# [RC210871]) using MegaTran 2.0 (Cat# [TT210002]).