

Product datasheet for PH310846

STYK1 (NM_018423) Human Mass Spec Standard

Product data:

Product Type:	Mass Spec Standards
Description:	STYK1 MS Standard C13 and N15-labeled recombinant protein (NP_060893)
Species:	Human
Expression Host:	HEK293
Expression cDNA Clone or AA Sequence:	RC210846
Predicted MW:	47.5 kDa
Protein Sequence:	>RC210846 protein sequence Red=Cloning site Green=Tags(s)

MGMTRMLLECSLSDKLCVIQEKQYEVIIIVPTLLVTIFLILLGVILWLFIREQRTQQQRSGPQGIAPVPPP
 RDLSEAGHGNNVALPLKETSVENFLGATTPALAKLQVPREQLSEVLEQICSGSGPIFRANMNTGDPSK
 PKSVILKALKEPAGLHEVQDFLGRIQFHQYLGKHKNLVQLEGCTEKLPLYMVLEDVAQGDLLGFLWTCR
 RDVMTMDGLLYDLTEKQVYHIGKQVLLALEFLQEKHLFHGDVAARNILMQSDLTAKLCGLGLAYEVYTRG
 AISSTQTIPLKWLAPERLLLRPASIRADVWSFGILLYEMVTLGAPPYPEVPPTSILEHLQRRKIMKRPS
 CTHMYSIMKSCWRWREADRPSPRELRLLEAAIKTADDEAVLQVPELVPELYAAVAGIRVESLFFYNYS
 ML

TRTRPLEQKLISEEDLAANDILDYKDDDDKV

Tag:	C-Myc/DDK
Purity:	> 80% as determined by SDS-PAGE and Coomassie blue staining
Concentration:	>0.05 µg/µL as determined by microplate BCA method
Labeling Method:	Labeled with [U- ¹³ C ₆ , ¹⁵ N ₄]-L-Arginine and [U- ¹³ C ₆ , ¹⁵ N ₂]-L-Lysine
Buffer:	25 mM Tris-HCl, 100 mM glycine, pH 7.3
Storage:	Store at -80°C. Avoid repeated freeze-thaw cycles.
Stability:	Stable for 3 months from receipt of products under proper storage and handling conditions.
RefSeq:	<u>NP_060893</u>
RefSeq Size:	3022
RefSeq ORF:	1266
Synonyms:	NOK; SuRTK106



[View online »](#)

Locus ID: 55359

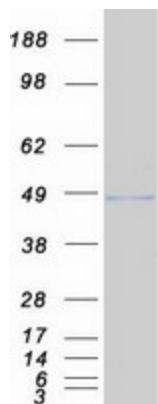
UniProt ID: [Q6J9G0](#)

Cytogenetics: 12p13.2

Summary: Receptor protein tyrosine kinases, like STYK1, play important roles in diverse cellular and developmental processes, such as cell proliferation, differentiation, and survival (Liu et al., 2004 [PubMed 15150103]).[supplied by OMIM, Mar 2008]

Protein Families: Druggable Genome, Protein Kinase, Transmembrane

Product images:



Coomassie blue staining of purified STYK1 protein (Cat# [TP310846]). The protein was produced from HEK293T cells transfected with STYK1 cDNA clone (Cat# [RC210846]) using MegaTran 2.0 (Cat# [TT210002]).